

Gaming Commission

620 North Street

Allen Godfrey

AGENCY

ADDRESS

CHIEF EXECUTIVE OFFICER

	Actual Expenses June 30, 2020	Estimated Expenses June 30, 2021	Requested For June 30, 2022	Requested Over/(Under) Estimated	
				AMOUNT	PERCENT
<b>I. A. PERSONAL SERVICES</b>					
1. Salaries, Wages & Fringe Benefits (Base)	7,541,844	7,692,700	7,692,700		
a. Additional Compensation					
b. Proposed Vacancy Rate (Dollar Amount)					
c. Per Diem	2,200	3,000	3,000		
<b>Total Salaries, Wages &amp; Fringe Benefits</b>	<b>7,544,044</b>	<b>7,695,700</b>	<b>7,695,700</b>		
2. Travel					
a. Travel & Subsistence (In-State)	65,435	50,000	84,263	34,263	68.53%
b. Travel & Subsistence (Out-Of-State)	57,036	60,000	96,000	36,000	60.00%
c. Travel & Subsistence (Out-Of-Country)	42,691	75,000	98,000	23,000	30.67%
<b>Total Travel</b>	<b>165,162</b>	<b>185,000</b>	<b>278,263</b>	<b>93,263</b>	<b>50.41%</b>
<b>B. CONTRACTUAL SERVICE S (Schedule B)</b>					
a. Tuition, Rewards & Awards	10,920	5,000	27,025	22,025	440.50%
b. Communications, Transportation & Utilities	18,781	28,000	38,500	10,500	37.50%
c. Public Information					
d. Rents	137,090	138,000	140,000	2,000	1.45%
e. Repairs & Service	33,503	65,000	66,500	1,500	2.31%
f. Fees, Professional & Other Services	139,657	254,300	270,860	16,560	6.51%
g. Other Contractual Services	39,526	50,000	81,000	31,000	62.00%
h. Data Processing	97,222	84,000	308,500	224,500	267.26%
i. Other	3,126	5,000	8,000	3,000	60.00%
<b>Total Contractual Services</b>	<b>479,825</b>	<b>629,300</b>	<b>940,385</b>	<b>311,085</b>	<b>49.43%</b>
<b>C. COMMODITIES (Schedule C)</b>					
a. Maintenance & Construction Materials & Supplies	7,374		10,000	10,000	100.00%
b. Printing & Office Supplies & Materials	44,705	23,000	46,500	23,500	102.17%
c. Equipment, Repair Parts, Supplies & Accessories	88,820	59,478	65,036	5,558	9.34%
d. Professional & Scientific Supplies & Materials	1,527	2,000	700	(1,300)	(65.00%)
e. Other Supplies & Materials	75,858	93,200	99,483	6,283	6.74%
<b>Total Commodities</b>	<b>218,284</b>	<b>177,678</b>	<b>221,719</b>	<b>44,041</b>	<b>24.79%</b>
<b>D. CAPITAL OUTLAY</b>					
1. Total Other Than Equipment (Schedule D-1)					
2. Equipment (Schedule D-2)					
b. Road Machinery, Farm & Other Working Equipment					
c. Office Machines, Furniture, Fixtures & Equipment		20,700	15,834	(4,866)	(23.51%)
d. IS Equipment (Data Processing & Telecommunications)		29,300	85,007	55,707	190.13%
e. Equipment - Lease Purchase					
f. Other Equipment	31,050		9,000	9,000	100.00%
<b>Total Equipment (Schedule D-2)</b>	<b>31,050</b>	<b>50,000</b>	<b>109,841</b>	<b>59,841</b>	<b>119.68%</b>
3. Vehicles (Schedule D-3)			135,000	135,000	100.00%
4. Wireless Comm. Devices (Schedule D-4)					
<b>E. SUBSIDIES, LOANS &amp; GRANTS (Schedule E)</b>					
<b>TOTAL EXPENDITURES</b>	<b>8,438,365</b>	<b>8,737,678</b>	<b>9,380,908</b>	<b>643,230</b>	<b>7.36%</b>
<b>II. BUDGET TO BE FUNDED AS FOLLOWS:</b>					
Cash Balance-Unencumbered	72,627	387,341	387,341		
General Fund Appropriation (Enter General Fund Lapse Below)	8,059,495	7,971,467	8,436,223	464,756	5.83%
State Support Special Funds					
Federal Funds					
Other Special Funds (Specify)					
Work Permits	398,630	407,500	407,500		
Seized Funds	79,353	100,000	100,000		
Investigations	215,601	258,711	258,711		
Coronavirus Supplemental Fund			178,474	178,474	100.00%
Less: Estimated Cash Available Next Fiscal Period	(387,341)	(387,341)	(387,341)		
<b>TOTAL FUNDS (equals Total Expenditures above)</b>	<b>8,438,365</b>	<b>8,737,678</b>	<b>9,380,908</b>	<b>643,230</b>	<b>7.36%</b>
GENERAL FUND LAPSE	376,728				
<b>III: PERSONNEL DATA</b>					
Number of Positions Authorized in Appropriation Bill					
a.) Perm Full	127	125	125		
b.) Perm Part					
c.) T-L Full					
d.) T-L Part					
Average Annual Vacancy Rate (Percentage)					
a.) Perm Full	17.39	18.00	18.00		
b.) Perm Part					
c.) T-L Full					
d.) T-L Part					

Approved by: Allen Godfrey

Official of Board or Commission

Submitted by: Shelly LeGrand

Date: 8/13/2020 1:51 PM

Budget Officer: Shelly LeGrand / slegrand@mgc.state.ms.us

Phone Number: 601-576-3842

Title: Director of Admin Services

Name of Agency : Gaming Commission

Specify Funding Sources As Shown Below	FY 2020 Actual Amount	% of Line Item	% of Total Budget	FY 2021 Estimated Amount	% of Line Item	% of Total Budget	FY 2022 Requested Amount	% of Line Item	% of Total Budget
1. General State Support Special (Specify)	7,462,501	98.92%		7,322,752	95.15%		7,322,752	95.15%	
2. Budget Contingency Fund									
3. Education Enhancement Fund									
4. Health Care Expendable Fund									
5. Tobacco Control Fund									
6. Capital Expense Fund									
7. Working Cash Stabilization Reserve Fund									
8. BP Settlement Fund									
9. Gulf Coast Restoration Fund									
10. Back To Business Mississippi Grant Fund									
11. MS COVID-19 Relief Payment Fund									
12. DFA CARES Act COVID-19 Fund									
13. MS Tourism Recovery Fund									
14. MS Nonprofit Museums Recovery Fund									
15. Equity in Distance Learning Fund									
16. Postsecondary Education COVID-19 Relief Grant Fund									
17. Independent Schools' COVID-19 Assistance Grant Fund									
18. MS Pandemic Response Broadband Availability Grant Program Fund									
19. MS Emergency Management Agency COVID-19 Fund									
20. MS Electric Cooperatives Broadband COVID-19 Grant Program Fund									
21. COVID-19 Broadband Provider Grant Program Fund									
22. Federal Other Special (Specify)	70,053	0.93%		207,500	2.70%		207,500	2.70%	
23. Work Permits									
24. Seized Funds	11,490	0.15%		165,448	2.15%		165,448	2.15%	
25. Investigations									
26. Coronavirus Supplemental Fund									
<b>Total Salaries</b>	<b>7,544,044</b>		<b>89.40%</b>	<b>7,695,700</b>		<b>88.07%</b>	<b>7,695,700</b>		<b>82.04%</b>
1. General State Support Special (Specify)	86,512	52.38%		126,737	68.51%		220,000	79.06%	
2. Budget Contingency Fund									
3. Education Enhancement Fund									
4. Health Care Expendable Fund									
5. Tobacco Control Fund									
6. Capital Expense Fund									
7. Working Cash Stabilization Reserve Fund									
8. BP Settlement Fund									
9. Gulf Coast Restoration Fund									
10. Back To Business Mississippi Grant Fund									
11. MS COVID-19 Relief Payment Fund									
12. DFA CARES Act COVID-19 Fund									
13. MS Tourism Recovery Fund									
14. MS Nonprofit Museums Recovery Fund									
15. Equity in Distance Learning Fund									
16. Postsecondary Education COVID-19 Relief Grant Fund									
17. Independent Schools' COVID-19 Assistance Grant Fund									
18. MS Pandemic Response Broadband Availability Grant Program Fund									
19. MS Emergency Management Agency COVID-19 Fund									
20. MS Electric Cooperatives Broadband COVID-19 Grant Program Fund									
21. COVID-19 Broadband Provider Grant Program Fund									
22. Federal Other Special (Specify)									
23. Work Permits									
24. Seized Funds									
25. Investigations	78,650	47.62%		58,263	31.49%		58,263	20.94%	
26. Coronavirus Supplemental Fund									
<b>Total Travel</b>	<b>165,162</b>		<b>1.96%</b>	<b>185,000</b>		<b>2.12%</b>	<b>278,263</b>		<b>2.97%</b>

Name of Agency : Gaming Commission

Specify Funding Sources As Shown Below	FY 2020 Actual Amount	% of Line Item	% of Total Budget	FY 2021 Estimated Amount	% of Line Item	% of Total Budget	FY 2022 Requested Amount	% of Line Item	% of Total Budget
1. General State Support Special (Specify)	350,215	72.99%		394,300	62.66%		575,385	61.19%	
2. Budget Contingency Fund									
3. Education Enhancement Fund									
4. Health Care Expendable Fund									
5. Tobacco Control Fund									
6. Capital Expense Fund									
7. Working Cash Stabilization Reserve Fund									
8. BP Settlement Fund									
9. Gulf Coast Restoration Fund									
10. Back To Business Mississippi Grant Fund									
11. MS COVID-19 Relief Payment Fund									
12. DFA CARES Act COVID-19 Fund									
13. MS Tourism Recovery Fund									
14. MS Nonprofit Museums Recovery Fund									
15. Equity in Distance Learning Fund									
16. Postsecondary Education COVID-19 Relief Grant Fund									
17. Independent Schools' COVID-19 Assistance Grant Fund									
18. MS Pandemic Response Broadband Availability Grant Program Fund									
19. MS Emergency Management Agency COVID-19 Fund									
20. MS Electric Cooperatives Broadband COVID-19 Grant Program Fund									
21. COVID-19 Broadband Provider Grant Program Fund									
22. Federal Other Special (Specify)	96,994	20.21%		200,000	31.78%		200,000	21.27%	
23. Work Permits									
24. Seized Funds									
25. Investigations	32,616	6.80%		35,000	5.56%		35,000	3.72%	
26. Coronavirus Supplemental Fund							130,000	13.82%	
<b>Total Contractual</b>	<b>479,825</b>		<b>5.69%</b>	<b>629,300</b>		<b>7.20%</b>	<b>940,385</b>		<b>10.02%</b>
1. General State Support Special (Specify)	159,867	73.24%		127,678	71.86%		190,247	85.81%	
2. Budget Contingency Fund									
3. Education Enhancement Fund									
4. Health Care Expendable Fund									
5. Tobacco Control Fund									
6. Capital Expense Fund									
7. Working Cash Stabilization Reserve Fund									
8. BP Settlement Fund									
9. Gulf Coast Restoration Fund									
10. Back To Business Mississippi Grant Fund									
11. MS COVID-19 Relief Payment Fund									
12. DFA CARES Act COVID-19 Fund									
13. MS Tourism Recovery Fund									
14. MS Nonprofit Museums Recovery Fund									
15. Equity in Distance Learning Fund									
16. Postsecondary Education COVID-19 Relief Grant Fund									
17. Independent Schools' COVID-19 Assistance Grant Fund									
18. MS Pandemic Response Broadband Availability Grant Program Fund									
19. MS Emergency Management Agency COVID-19 Fund									
20. MS Electric Cooperatives Broadband COVID-19 Grant Program Fund									
21. COVID-19 Broadband Provider Grant Program Fund									
22. Federal Other Special (Specify)									
23. Work Permits	20,294	9.30%							
24. Seized Funds	18,111	8.30%		50,000	28.14%		25,000	11.28%	
25. Investigations	20,012	9.17%					6,472	2.92%	
26. Coronavirus Supplemental Fund									
<b>Total Commodities</b>	<b>218,284</b>		<b>2.59%</b>	<b>177,678</b>		<b>2.03%</b>	<b>221,719</b>		<b>2.36%</b>

Name of Agency : Gaming Commission

Specify Funding Sources As Shown Below	FY 2020 Actual Amount	% of Line Item	% of Total Budget	FY 2021 Estimated Amount	% of Line Item	% of Total Budget	FY 2022 Requested Amount	% of Line Item	% of Total Budget
1. General _____ State Support Special (Specify) _____									
2. Budget Contingency Fund									
3. Education Enhancement Fund									
4. Health Care Expendable Fund									
5. Tobacco Control Fund									
6. Capital Expense Fund									
7. Working Cash Stabilization Reserve Fund									
8. BP Settlement Fund									
9. Gulf Coast Restoration Fund									
10. Back To Business Mississippi Grant Fund									
11. MS COVID-19 Relief Payment Fund									
12. DFA CARES Act COVID-19 Fund									
13. MS Tourism Recovery Fund									
14. MS Nonprofit Museums Recovery Fund									
15. Equity in Distance Learning Fund									
16. Postsecondary Education COVID-19 Relief Grant Fund									
17. Independent Schools' COVID-19 Assistance Grant Fund									
18. MS Pandemic Response Broadband Availability Grant Program Fund									
19. MS Emergency Management Agency COVID-19 Fund									
20. MS Electric Cooperatives Broadband COVID-19 Grant Program Fund									
21. COVID-19 Broadband Provider Grant Program Fund									
22. Federal _____ Other Special (Specify) _____									
23. Work Permits									
24. Seized Funds									
25. Investigations									
26. Coronavirus Supplemental Fund									
<b>Total Capital Other Than Equipment</b>									
1. General _____ State Support Special (Specify) _____	400	1.29%					67,839	61.76%	
2. Budget Contingency Fund									
3. Education Enhancement Fund									
4. Health Care Expendable Fund									
5. Tobacco Control Fund									
6. Capital Expense Fund									
7. Working Cash Stabilization Reserve Fund									
8. BP Settlement Fund									
9. Gulf Coast Restoration Fund									
10. Back To Business Mississippi Grant Fund									
11. MS COVID-19 Relief Payment Fund									
12. DFA CARES Act COVID-19 Fund									
13. MS Tourism Recovery Fund									
14. MS Nonprofit Museums Recovery Fund									
15. Equity in Distance Learning Fund									
16. Postsecondary Education COVID-19 Relief Grant Fund									
17. Independent Schools' COVID-19 Assistance Grant Fund									
18. MS Pandemic Response Broadband Availability Grant Program Fund									
19. MS Emergency Management Agency COVID-19 Fund									
20. MS Electric Cooperatives Broadband COVID-19 Grant Program Fund									
21. COVID-19 Broadband Provider Grant Program Fund									
22. Federal _____ Other Special (Specify) _____									
23. Work Permits									
24. Seized Funds	30,650	98.71%		50,000	100.00				
25. Investigations							42,002	38.24%	
26. Coronavirus Supplemental Fund									
<b>Total Capital Equipment</b>	<b>31,050</b>		<b>0.37%</b>	<b>50,000</b>		<b>0.57%</b>	<b>109,841</b>		<b>1.17%</b>

Name of Agency : Gaming Commission

Specify Funding Sources As Shown Below	FY 2020 Actual Amount	% of Line Item	% of Total Budget	FY 2021 Estimated Amount	% of Line Item	% of Total Budget	FY 2022 Requested Amount	% of Line Item	% of Total Budget
1. General _____ State Support Special (Specify) _____							60,000	44.44%	
2. Budget Contingency Fund									
3. Education Enhancement Fund									
4. Health Care Expendable Fund									
5. Tobacco Control Fund									
6. Capital Expense Fund									
7. Working Cash Stabilization Reserve Fund									
8. BP Settlement Fund									
9. Gulf Coast Restoration Fund									
10. Back To Business Mississippi Grant Fund									
11. MS COVID-19 Relief Payment Fund									
12. DFA CARES Act COVID-19 Fund									
13. MS Tourism Recovery Fund									
14. MS Nonprofit Museums Recovery Fund									
15. Equity in Distance Learning Fund									
16. Postsecondary Education COVID-19 Relief Grant Fund									
17. Independent Schools' COVID-19 Assistance Grant Fund									
18. MS Pandemic Response Broadband Availability Grant Program Fund									
19. MS Emergency Management Agency COVID-19 Fund									
20. MS Electric Cooperatives Broadband COVID-19 Grant Program Fund									
21. COVID-19 Broadband Provider Grant Program Fund									
22. Federal _____ Other Special (Specify) _____									
23. Work Permits							75,000	55.56%	
24. Seized Funds									
25. Investigations									
26. Coronavirus Supplemental Fund									
<b>Total Vehicles</b>							<b>135,000</b>		<b>1.44%</b>
1. General _____ State Support Special (Specify) _____									
2. Budget Contingency Fund									
3. Education Enhancement Fund									
4. Health Care Expendable Fund									
5. Tobacco Control Fund									
6. Capital Expense Fund									
7. Working Cash Stabilization Reserve Fund									
8. BP Settlement Fund									
9. Gulf Coast Restoration Fund									
10. Back To Business Mississippi Grant Fund									
11. MS COVID-19 Relief Payment Fund									
12. DFA CARES Act COVID-19 Fund									
13. MS Tourism Recovery Fund									
14. MS Nonprofit Museums Recovery Fund									
15. Equity in Distance Learning Fund									
16. Postsecondary Education COVID-19 Relief Grant Fund									
17. Independent Schools' COVID-19 Assistance Grant Fund									
18. MS Pandemic Response Broadband Availability Grant Program Fund									
19. MS Emergency Management Agency COVID-19 Fund									
20. MS Electric Cooperatives Broadband COVID-19 Grant Program Fund									
21. COVID-19 Broadband Provider Grant Program Fund									
22. Federal _____ Other Special (Specify) _____									
23. Work Permits									
24. Seized Funds									
25. Investigations									
26. Coronavirus Supplemental Fund									
<b>Total Wireless Communication Devs.</b>									



Name of Agency : Gaming Commission

Specify Funding Sources As Shown Below	FY 2020 Actual Amount	% of Line Item	% of Total Budget	FY 2021 Estimated Amount	% of Line Item	% of Total Budget	FY 2022 Requested Amount	% of Line Item	% of Total Budget
1. General _____ State Support Special (Specify) _____									
2. Budget Contingency Fund									
3. Education Enhancement Fund									
4. Health Care Expendable Fund									
5. Tobacco Control Fund									
6. Capital Expense Fund									
7. Working Cash Stabilization Reserve Fund									
8. BP Settlement Fund									
9. Gulf Coast Restoration Fund									
10. Back To Business Mississippi Grant Fund									
11. MS COVID-19 Relief Payment Fund									
12. DFA CARES Act COVID-19 Fund									
13. MS Tourism Recovery Fund									
14. MS Nonprofit Museums Recovery Fund									
15. Equity in Distance Learning Fund									
16. Postsecondary Education COVID-19 Relief Grant Fund									
17. Independent Schools' COVID-19 Assistance Grant Fund									
18. MS Pandemic Response Broadband Availability Grant Program Fund									
19. MS Emergency Management Agency COVID-19 Fund									
20. MS Electric Cooperatives Broadband COVID-19 Grant Program Fund									
21. COVID-19 Broadband Provider Grant Program Fund									
22. Federal _____ Other Special (Specify) _____									
23. Work Permits									
24. Seized Funds									
25. Investigations									
26. Coronavirus Supplemental Fund									
<b>Total Subsidies</b>									
1. General _____ State Support Special (Specify) _____	8,059,495	95.51%		7,971,467	91.23%		8,436,223	89.93%	
2. Budget Contingency Fund									
3. Education Enhancement Fund									
4. Health Care Expendable Fund									
5. Tobacco Control Fund									
6. Capital Expense Fund									
7. Working Cash Stabilization Reserve Fund									
8. BP Settlement Fund									
9. Gulf Coast Restoration Fund									
10. Back To Business Mississippi Grant Fund									
11. MS COVID-19 Relief Payment Fund									
12. DFA CARES Act COVID-19 Fund									
13. MS Tourism Recovery Fund									
14. MS Nonprofit Museums Recovery Fund									
15. Equity in Distance Learning Fund									
16. Postsecondary Education COVID-19 Relief Grant Fund									
17. Independent Schools' COVID-19 Assistance Grant Fund									
18. MS Pandemic Response Broadband Availability Grant Program Fund									
19. MS Emergency Management Agency COVID-19 Fund									
20. MS Electric Cooperatives Broadband COVID-19 Grant Program Fund									
21. COVID-19 Broadband Provider Grant Program Fund									
22. Federal _____ Other Special (Specify) _____									
23. Work Permits	187,341	2.22%		407,500	4.66%		407,500	4.34%	
24. Seized Funds	48,761	0.58%		100,000	1.14%		100,000	1.07%	
25. Investigations	142,768	1.69%		258,711	2.96%		258,711	2.76%	
26. Coronavirus Supplemental Fund							178,474	1.90%	
<b>TOTAL</b>	<b>8,438,365</b>		<b>100.00%</b>	<b>8,737,678</b>		<b>100.00%</b>	<b>9,380,908</b>		<b>100.00%</b>

**SPECIAL FUNDS DETAIL**

Gaming Commission (182-00)

Name of Agency

<b>S. STATE SUPPORT SPECIAL FUNDS</b>		<b>(1) Actual Revenues FY 2020</b>	<b>(2) Estimated Revenues FY 2021</b>	<b>(3) Requested Revenues FY 2022</b>
<b>Source (Fund Number)</b>	<b>Detailed Description of Source</b>			
Budget Contingency Fund	BCF - Budget Contingency			
Education Enhancement Fund	EEF - Education Enhancement Fund			
Health Care Expendable Fund	HCEF - Health Care Expendable Fund			
Tobacco Control Fund	TCF - Tobacco Control Fund			
Capital Expense Fund	CEF - Capital Expense Fund			
Working Cash Stabilization Reserve Fund	WCSRF - Working Cash Stabilization Reserve Fund			
BP Settlement Fund	BPSF - BP Settlement Fund			
Gulf Coast Restoration Fund	GCRF - Gulf Coast Restoration Fund			
Back To Business Mississippi Grant Fund	BTBMGF - Back To Business Mississippi Grant Fund			
MS COVID-19 Relief Payment Fund	MCRPF - MS COVID-19 Relief Payment Fund			
DFA CARES Act COVID-19 Fund	DCACF - DFA CARES Act COVID-19 Fund			
MS Tourism Recovery Fund	MTRF - MS Tourism Recovery Fund			
MS Nonprofit Museums Recovery Fund	MNMRF - MS Nonprofit Museums Recovery Fund			
Equity in Distance Learning Fund	EIDLF - Equity in Distance Learning Fund			
Postsecondary Education COVID-19 Relief Grant Fund	PECMRGF - Postsecondary Education COVID-19 Relief Grant Fund			
Independent Schools' COVID-19 Assistance Grant Fund	ISCAGF - Independent Schools' COVID-19 Assistance Grant Fund			
MS Pandemic Response Broadband Availability Grant Program Fund	MPRBAGPF - MS Pandemic Response Broadband Availability Grant Program Fund			
MS Emergency Management Agency COVID-19 Fund	MEMACF - MS Emergency Management Agency COVID-19 Fund			
MS Electric Cooperatives Broadband COVID-19 Grant Program Fund	MECBCGPF - MS Electric Cooperatives Broadband COVID-19 Grant Program Fund			
COVID-19 Broadband Provider Grant Program Fund	CBPGPF - COVID-19 Broadband Provider Grant Program Fund			
<b>State Support Special Fund TOTAL</b>				
STATE SUPPORT SPECIAL FUND LAPSE				

<b>A. FEDERAL FUNDS *</b>		<b>Percentage Match Requirement</b>	<b>(1) Actual Revenues FY 2020</b>	<b>(2) Estimated Revenues FY 2021</b>	<b>(3) Requested Revenues FY 2022</b>
<b>Source (Fund Number)</b>	<b>Detailed Description of Source</b>	<b>FY 2021 FY 2022</b>			
	Cash Balance-Unencumbered				
<b>Federal Fund TOTAL</b>					

<b>B. OTHER SPECIAL FUNDS (NON-FED'L)</b>		<b>(1) Actual Revenues FY 2020</b>	<b>(2) Estimated Revenues FY 2021</b>	<b>(3) Requested Revenues FY 2022</b>
<b>Source (Fund Number)</b>	<b>Detailed Description of Source</b>			
	Cash Balance-Unencumbered	72,627	387,341	387,341
Work Permits (3318700000)	Work Permit Fees	398,630	407,500	407,500
Seized Funds (3318700000)	Investigations	79,353	100,000	100,000
Investigations (3318700000)	Investigations	215,601	258,711	258,711

**SPECIAL FUNDS DETAIL**

Gaming Commission (182-00)

Name of Agency

Coronavirus Supplemental Fund (5820185000)	Sub-Grant from DPS			178,474
<b>Other Special Fund TOTAL</b>		<b>766,211</b>	<b>1,153,552</b>	<b>1,332,026</b>

<b>SECTIONS S + A + B TOTAL</b>		<b>766,211</b>	<b>1,153,552</b>	<b>1,332,026</b>
---------------------------------	--	----------------	------------------	------------------

<b>C. TREASURY FUND/BANK ACCOUNTS *</b>			<b>(1) Reconciled Balance as of 6/30/20</b>	<b>(2) Balance as of 6/30/21</b>	<b>(3) Balance as of 6/30/22</b>
<b>Name of Fund/Account</b>	<b>Fund/Account Number</b>	<b>Name of Bank (If Applicable)</b>			
MGC Petty Cash	2218700000	Regions Bank	2,247	2,500	2,500

\* Any non-federal funds that have restricted uses must be identified and narrative of restrictions attached.



**NARRATIVE OF SPECIAL FUNDS DETAIL AND TREASURY  
FUND/BANK ACCOUNTS**

Gaming Commission (182-00)

Name of Agency

**FEDERAL FUNDS**

The Mississippi Gaming Commission is a participant in a Federal Equitable Sharing Agreement with the U.S. Department of Justice. When the MGC participates in a law enforcement activity in conjunction with the U.S. Department of Justice, we are entitled to an equitable-share of the federally forfeited assets. To remain in compliance with the agreement, the Commission must use such funds for law enforcement purposes only, in accordance with the statutes and guidelines that govern equitable sharing. It is further stipulated that these assets may only be used to augment the law enforcement budget and not to supplant it. While there are no such funds as of FY 2021, any future fund balance due to seized and forfeited funds can only be used above and beyond our normal operating budget.

**OTHER SPECIAL FUNDS**

**3187 Investigations**

The Mississippi Gaming Commission has adopted regulations that authorize the Commission to charge monies for various work products that are necessary to carry out the duties given to the Commission and to comply with Statutes set forth in the Gaming Control Act. The MGC exclusively relied on Special Fund Revenues to fund the agency through FY 2016. These special funds are derived from each licensed casino paying an inclusive investigative fee on a quarterly basis. This inclusive fee covers all investigations, field verifications and audits of current casino operations. The MGC was given the authority to levy the above mentioned fee, beginning with FY 2011.

During the Regular Legislative Session, house Bill 1147 amended the Mississippi Code of 1972, Section 75-76-81 as follows: "The Mississippi Gaming Commission shall assess and collect all fees imposed under Section 75-76-33(2)(f) and shall deposit the funds received from the fees into the Mississippi Gaming Commission Fund. Unexpended amounts remaining in the special fund at the end of a fiscal year shall not lapse into the State General Fund."

During FY 2020, (SB3037), and again for FY 2021, (SB2957), the Mississippi Gaming Commission was given authority to collect and deposit up to \$766,211 into the 3187 Special Fund. This money will be collected from work permit fees, investigation fees and seized funds. These are reflected on the front page of this budget and also on the Revenue Source Report at the end of this budget. These expenditures are detailed in the appropriate sections of this budget.

**3188 Charitable Bingo**

In the Gaming Control Act, the MGC is also tasked with the oversight & enforcement of the Charitable Bingo Laws. Along with this task, the Commission was given the authority to assess various fees associated with this oversight. These fees include, but are not limited to, License Fees, Bingo Revenue Fees, Pull-tab Fees, and Machine Fees. Since FY 2016, this fund has been inactive and all revenue collected is deposited into the general fund.

Section 97-33-101 of the Charitable Bingo Law states:

"All fees and fines collected by the commission pursuant to Sections 97-33-51 through 97-33-203 shall be deposited into a special fund to be known as the "Charitable Bingo Fund," which is hereby created in the State Treasury. The monies in such fund shall be used exclusively to support the activities of the commission related to the regulation of the Charitable Bingo Law, upon appropriation by the Legislature. Unexpended amounts remaining in the fund at the end of a fiscal year shall not lapse into the State General Fund, and any interest earned on amounts in such special fund shall be deposited to the credit of the special fund."

**TREASURY FUND / BANK**

Fund 3318700000: Please refer to Special Fund detail above.

CONTINUATION AND EXPANDED TOTAL REQUEST

Gaming Commission (182-00)

SUMMARY OF ALL PROGRAMS

Name of Agency

Program

	FY 2020 Actual				
	(1) General	(2) State Support Special	(3) Federal	(4) Other Special	(5) Total
Salaries, Wages & Fringe	7,462,501			81,543	7,544,044
Travel	86,512			78,650	165,162
Contractual Services	350,215			129,610	479,825
Commodities	159,867			58,417	218,284
Other Than Equipment					
Equipment	400			30,650	31,050
Vehicles					
Wireless Communication Devices					
Subsidies, Loans & Grants					
<b>Total</b>	<b>8,059,495</b>			<b>378,870</b>	<b>8,438,365</b>
No. of Positions (FTE)	127.00				127.00

	FY 2021 Estimated				
	(6) General	(7) State Support Special	(8) Federal	(9) Other Special	(10) Total
Salaries, Wages & Fringe	7,322,752			372,948	7,695,700
Travel	126,737			58,263	185,000
Contractual Services	394,300			235,000	629,300
Commodities	127,678			50,000	177,678
Other Than Equipment					
Equipment				50,000	50,000
Vehicles					
Wireless Communication Devices					
Subsidies, Loans & Grants					
<b>Total</b>	<b>7,971,467</b>			<b>766,211</b>	<b>8,737,678</b>
No. of Positions (FTE)	125.00				125.00

	FY 2022 Increase/Decrease for Continuation				
	(11) General	(12) State Support Special	(13) Federal	(14) Other Special	(15) Total
Salaries, Wages & Fringe					
Travel	93,263				93,263
Contractual Services	181,085			130,000	311,085
Commodities	62,569			(18,528)	44,041
Other Than Equipment					
Equipment	67,839			(7,998)	59,841
Vehicles	60,000			75,000	135,000
Wireless Communication Devices					
Subsidies, Loans & Grants					
<b>Total</b>	<b>464,756</b>			<b>178,474</b>	<b>643,230</b>
No. of Positions (FTE)					

Note: FY2022 Total Request = FY2021 Estimated + FY2022 Incr(Decr) for Continuation + FY2022 Expansion/Reduction of Existing Activities + FY2022 New Activities.

CONTINUATION AND EXPANDED TOTAL REQUEST

Gaming Commission (182-00)

SUMMARY OF ALL PROGRAMS

Name of Agency	Program				
	<b>FY 2022 Expansion/Reduction of Existing Activities</b>				
	<b>(16) General</b>	<b>(17) State Support Special</b>	<b>(18) Federal</b>	<b>(19) Other Special</b>	<b>(20) Total</b>
Salaries, Wages & Fringe					
Travel					
Contractual Services					
Commodities					
Other Than Equipment					
Equipment					
Vehicles					
Wireless Communication Devices					
Subsidies, Loans & Grants					
<b>Total</b>					
No. of Positions (FTE)					
	<b>FY 2022 New Activities (*)</b>				
	<b>(21) General</b>	<b>(22) State Support Special</b>	<b>(23) Federal</b>	<b>(24) Other Special</b>	<b>(25) Total</b>
Salaries, Wages & Fringe					
Travel					
Contractual Services					
Commodities					
Other Than Equipment					
Equipment					
Vehicles					
Wireless Communication Devices					
Subsidies, Loans & Grants					
<b>Total</b>					
No. of Positions (FTE)					
	<b>FY 2022 Total Request</b>				
	<b>(26) General</b>	<b>(27) State Support Special</b>	<b>(28) Federal</b>	<b>(29) Other Special</b>	<b>(30) Total</b>
Salaries, Wages & Fringe	7,322,752			372,948	7,695,700
Travel	220,000			58,263	278,263
Contractual Services	575,385			365,000	940,385
Commodities	190,247			31,472	221,719
Other Than Equipment					
Equipment	67,839			42,002	109,841
Vehicles	60,000			75,000	135,000
Wireless Communication Devices					
Subsidies, Loans & Grants					
<b>Total</b>	<b>8,436,223</b>			<b>944,685</b>	<b>9,380,908</b>
No. of Positions (FTE)	125.00				125.00

Note: FY2022 Total Request = FY2021 Estimated + FY2022 Incr(Decr) for Continuation + FY2022 Expansion/Reduction of Existing Activities + FY2022 New Activities.

**SUMMARY OF PROGRAMS**  
**FORM MBR-1-03sum**

Gaming Commission (182-00)

Name of Agency

FUNDING REQUESTED FISCAL YEAR 2022

PROGRAM		GENERAL	ST. SUPP. SPECIAL	FEDERAL	OTHER SPECIAL	TOTAL
1.	Riverboat Gaming	6,841,223			919,625	7,760,848
2.	Charitable Bingo	1,595,000			25,060	1,620,060
	Summary of All Programs	8,436,223			944,685	9,380,908

CONTINUATION AND EXPANDED REQUEST

Program 1 of 2  
Riverboat Gaming  
Program

Gaming Commission (182-00)

Name of Agency

	FY 2020 Actual				
	(1) General	(2) State Support Special	(3) Federal	(4) Other Special	(5) Total
Salaries,Wages & Fringe	5,957,606			70,053	6,027,659
Travel	38,579			78,650	117,229
Contractual Services	337,375			129,610	466,985
Commodities	149,574			58,417	207,991
Other Than Equipment					
Equipment	400			30,650	31,050
Vehicles					
Wireless Communication Devices					
Subsidies, Loans & Grants					
<b>Total</b>	<b>6,483,534</b>			<b>367,380</b>	<b>6,850,914</b>
No. of Positions (FTE)	114.00				114.00

	FY 2021 Estimated				
	(6) General	(7) State Support Special	(8) Federal	(9) Other Special	(10) Total
Salaries,Wages & Fringe	5,847,752			347,888	6,195,640
Travel	101,737			58,263	160,000
Contractual Services	369,300			235,000	604,300
Commodities	112,678			50,000	162,678
Other Than Equipment					
Equipment				50,000	50,000
Vehicles					
Wireless Communication Devices					
Subsidies, Loans & Grants					
<b>Total</b>	<b>6,431,467</b>			<b>741,151</b>	<b>7,172,618</b>
No. of Positions (FTE)	112.00				112.00

	FY 2022 Increase/Decrease for Continuation				
	(11) General	(12) State Support Special	(13) Federal	(14) Other Special	(15) Total
Salaries,Wages & Fringe					58,263
Travel	58,263				58,263
Contractual Services	166,085			130,000	296,085
Commodities	57,569			(18,528)	39,041
Other Than Equipment					
Equipment	67,839			(7,998)	59,841
Vehicles	60,000			75,000	135,000
Wireless Communication Devices					
Subsidies, Loans & Grants					
<b>Total</b>	<b>409,756</b>			<b>178,474</b>	<b>588,230</b>
No. of Positions (FTE)					

Note: FY2022 Total Request = FY2021 Estimated + FY2022 Incr(Decr) for Continuation + FY2022 Expansion/Reduction of Existing Activities + FY2022 New Activities

CONTINUATION AND EXPANDED REQUEST

Program 1 of 2  
Riverboat Gaming  
Program

Gaming Commission (182-00)

Name of Agency

	FY 2022 Expansion/Reduction of Existing Activities				
	(16) General	(17) State Support Special	(18) Federal	(19) Other Special	(20) Total
Salaries, Wages & Fringe					
Travel					
Contractual Services					
Commodities					
Other Than Equipment					
Equipment					
Vehicles					
Wireless Communication Devices					
Subsidies, Loans & Grants					
<b>Total</b>					
No. of Positions (FTE)					

	FY 2022 New Activities (*)				
	(21) General	(22) State Support Special	(23) Federal	(24) Other Special	(25) Total
Salaries, Wages & Fringe					
Travel					
Contractual Services					
Commodities					
Other Than Equipment					
Equipment					
Vehicles					
Wireless Communication Devices					
Subsidies, Loans & Grants					
<b>Total</b>					
No. of Positions (FTE)					

	FY 2022 Total Request				
	(26) General	(27) State Support Special	(28) Federal	(29) Other Special	(30) Total
Salaries, Wages & Fringe	5,847,752			347,888	6,195,640
Travel	160,000			58,263	218,263
Contractual Services	535,385			365,000	900,385
Commodities	170,247			31,472	201,719
Other Than Equipment					
Equipment	67,839			42,002	109,841
Vehicles	60,000			75,000	135,000
Wireless Communication Devices					
Subsidies, Loans & Grants					
<b>Total</b>	<b>6,841,223</b>			<b>919,625</b>	<b>7,760,848</b>
No. of Positions (FTE)	112.00				112.00

Note: FY2022 Total Request = FY2021 Estimated + FY2022 Incr(Decr) for Continuation + FY2022 Expansion/Reduction of Existing Activities + FY2022 New Activities



CONTINUATION AND EXPANDED REQUEST

Program 2 of 2

Charitable Bingo

Gaming Commission (182-00)

Name of Agency

Program

	FY 2020 Actual				
	(1) General	(2) State Support Special	(3) Federal	(4) Other Special	(5) Total
Salaries, Wages & Fringe	1,504,895			11,490	1,516,385
Travel	47,933				47,933
Contractual Services	12,840				12,840
Commodities	10,293				10,293
Other Than Equipment					
Equipment					
Vehicles					
Wireless Communication Devices					
Subsidies, Loans & Grants					
<b>Total</b>	<b>1,575,961</b>			<b>11,490</b>	<b>1,587,451</b>
No. of Positions (FTE)	13.00				13.00

	FY 2021 Estimated				
	(6) General	(7) State Support Special	(8) Federal	(9) Other Special	(10) Total
Salaries, Wages & Fringe	1,475,000			25,060	1,500,060
Travel	25,000				25,000
Contractual Services	25,000				25,000
Commodities	15,000				15,000
Other Than Equipment					
Equipment					
Vehicles					
Wireless Communication Devices					
Subsidies, Loans & Grants					
<b>Total</b>	<b>1,540,000</b>			<b>25,060</b>	<b>1,565,060</b>
No. of Positions (FTE)	13.00				13.00

	FY 2022 Increase/Decrease for Continuation				
	(11) General	(12) State Support Special	(13) Federal	(14) Other Special	(15) Total
Salaries, Wages & Fringe					
Travel	35,000				35,000
Contractual Services	15,000				15,000
Commodities	5,000				5,000
Other Than Equipment					
Equipment					
Vehicles					
Wireless Communication Devices					
Subsidies, Loans & Grants					
<b>Total</b>	<b>55,000</b>				<b>55,000</b>
No. of Positions (FTE)					

Note: FY2022 Total Request = FY2021 Estimated + FY2022 Incr(Decr) for Continuation + FY2022 Expansion/Reduction of Existing Activities + FY2022 New Activities

CONTINUATION AND EXPANDED REQUEST

Program 2 of 2

Charitable Bingo

Gaming Commission (182-00)

Name of Agency

Program

	FY 2022 Expansion/Reduction of Existing Activities				
	(16) General	(17) State Support Special	(18) Federal	(19) Other Special	(20) Total
Salaries,Wages & Fringe					
Travel					
Contractual Services					
Commodities					
Other Than Equipment					
Equipment					
Vehicles					
Wireless Communication Devices					
Subsidies, Loans & Grants					
<b>Total</b>					
No. of Positions (FTE)					

	FY 2022 New Activities (*)				
	(21) General	(22) State Support Special	(23) Federal	(24) Other Special	(25) Total
Salaries,Wages & Fringe					
Travel					
Contractual Services					
Commodities					
Other Than Equipment					
Equipment					
Vehicles					
Wireless Communication Devices					
Subsidies, Loans & Grants					
<b>Total</b>					
No. of Positions (FTE)					

	FY 2022 Total Request				
	(26) General	(27) State Support Special	(28) Federal	(29) Other Special	(30) Total
Salaries,Wages & Fringe	1,475,000			25,060	1,500,060
Travel	60,000				60,000
Contractual Services	40,000				40,000
Commodities	20,000				20,000
Other Than Equipment					
Equipment					
Vehicles					
Wireless Communication Devices					
Subsidies, Loans & Grants					
<b>Total</b>	<b>1,595,000</b>			<b>25,060</b>	<b>1,620,060</b>
No. of Positions (FTE)	13.00				13.00

Note: FY2022 Total Request = FY2021 Estimated + FY2022 Incr(Decr) for Continuation + FY2022 Expansion/Reduction of Existing Activities + FY2022 New Activities.

PROGRAM DECISION UNITS

Gaming Commission

1 - Riverboat Gaming

Name of Agency

Program Name

	A	B	C	D	E	F	G	H
EXPENDITURES	FY 2021 Appropriated	Escalations By DFA	Non-Recurring Items	Travel	Contractual Services	Commodities	Equipment	Vehicles
<b>SALARIES</b>	6,195,640							
GENERAL	5,847,752							
ST. SUP. SPECIAL								
FEDERAL								
OTHER	347,888							
<b>TRAVEL</b>	160,000			58,263				
GENERAL	101,737			58,263				
ST. SUP. SPECIAL								
FEDERAL								
OTHER	58,263							
<b>CONTRACTUAL</b>	604,300				296,085			
GENERAL	369,300				166,085			
ST. SUP. SPECIAL								
FEDERAL								
OTHER	235,000				130,000			
<b>COMMODITIES</b>	162,678					39,041		
GENERAL	112,678					57,569		
ST. SUP. SPECIAL								
FEDERAL								
OTHER	50,000					(18,528)		
<b>CAPITAL-OTE</b>								
GENERAL								
ST. SUP. SPECIAL								
FEDERAL								
OTHER								
<b>EQUIPMENT</b>	50,000						59,841	
GENERAL							67,839	
ST. SUP. SPECIAL								
FEDERAL								
OTHER	50,000						(7,998)	
<b>VEHICLES</b>								135,000
GENERAL								60,000
ST. SUP. SPECIAL								
FEDERAL								
OTHER								75,000
<b>WIRELESS DEV</b>								
GENERAL								
ST. SUP. SPECIAL								
FEDERAL								
OTHER								
<b>SUBSIDIES</b>								
GENERAL								
ST. SUP. SPECIAL								
FEDERAL								
OTHER								
<b>TOTAL</b>	7,172,618			58,263	296,085	39,041	59,841	135,000

FUNDING

GENERAL FUNDS	6,431,467			58,263	166,085	57,569	67,839	60,000
ST. SUP. SPCL FUNDS								
FEDERAL FUNDS								
OTHER SP. FUNDS	741,151				130,000	(18,528)	(7,998)	75,000
<b>TOTAL</b>	7,172,618			58,263	296,085	39,041	59,841	135,000

POSITIONS

GENERAL FTE	112.00							
ST. SUP. SPCL. FTE								
FEDERAL FTE								
OTHER SP. FTE								
<b>TOTAL</b>	112.00							

PRIORITY LEVEL :

			3	2	4	5	1
--	--	--	---	---	---	---	---

PROGRAM DECISION UNITS

	I	J						
EXPENDITURES	Total Funding Change	FY 2022 Total Request						
<b>SALARIES</b>		6,195,640						
GENERAL		5,847,752						
ST. SUP. SPECIAL								
FEDERAL								
OTHER		347,888						
<b>TRAVEL</b>	58,263	218,263						
GENERAL	58,263	160,000						
ST. SUP. SPECIAL								
FEDERAL								
OTHER		58,263						
<b>CONTRACTUAL</b>	296,085	900,385						
GENERAL	166,085	535,385						
ST. SUP. SPECIAL								
FEDERAL								
OTHER	130,000	365,000						
<b>COMMODITIES</b>	39,041	201,719						
GENERAL	57,569	170,247						
ST. SUP. SPECIAL								
FEDERAL								
OTHER	(18,528)	31,472						
<b>CAPTITAL-OTE</b>								
GENERAL								
ST. SUP. SPECIAL								
FEDERAL								
OTHER								
<b>EQUIPMENT</b>	59,841	109,841						
GENERAL	67,839	67,839						
ST. SUP. SPECIAL								
FEDERAL								
OTHER	(7,998)	42,002						
<b>VEHICLES</b>	135,000	135,000						
GENERAL	60,000	60,000						
ST. SUP. SPECIAL								
FEDERAL								
OTHER	75,000	75,000						
<b>WIRELESS DEV</b>								
GENERAL								
ST. SUP. SPECIAL								
FEDERAL								
OTHER								
<b>SUBSIDIES</b>								
GENERAL								
ST. SUP. SPECIAL								
FEDERAL								
OTHER								
<b>TOTAL</b>	588,230	7,760,848						

FUNDING

GENERAL FUNDS	409,756	6,841,223						
ST. SUP. SPCL FUNDS								
FEDERAL FUNDS								
OTHER SP. FUNDS	178,474	919,625						
<b>TOTAL</b>	588,230	7,760,848						

POSITIONS

GENERAL FTE		112.00						
ST. SUP. SPCL. FTE								
FEDERAL FTE								
OTHER SP. FTE								
<b>TOTAL</b>		112.00						

PRIORITY LEVEL :

--	--	--	--	--	--	--	--	--

PROGRAM DECISION UNITS

Gaming Commission

2 - Charitable Bingo

Name of Agency

Program Name

	A	B	C	D	E	F	G	H
	FY 2021 Appropriated	Escalations By DFA	Non-Recurring Items	Travel	Contractual Services	Commodities	Total Funding Change	FY 2022 Total Request
<b>EXPENDITURES</b>								1,500,060
<b>SALARIES</b>	1,500,060							1,500,060
GENERAL	1,475,000							1,475,000
ST. SUP. SPECIAL								
FEDERAL								
OTHER	25,060							25,060
<b>TRAVEL</b>	25,000			35,000			35,000	60,000
GENERAL	25,000			35,000			35,000	60,000
ST. SUP. SPECIAL								
FEDERAL								
OTHER								
<b>CONTRACTUAL</b>	25,000				15,000		15,000	40,000
GENERAL	25,000				15,000		15,000	40,000
ST. SUP. SPECIAL								
FEDERAL								
OTHER								
<b>COMMODITIES</b>	15,000					5,000	5,000	20,000
GENERAL	15,000					5,000	5,000	20,000
ST. SUP. SPECIAL								
FEDERAL								
OTHER								
<b>CAPTITAL-OTE</b>								
GENERAL								
ST. SUP. SPECIAL								
FEDERAL								
OTHER								
<b>EQUIPMENT</b>								
GENERAL								
ST. SUP. SPECIAL								
FEDERAL								
OTHER								
<b>VEHICLES</b>								
GENERAL								
ST. SUP. SPECIAL								
FEDERAL								
OTHER								
<b>WIRELESS DEV</b>								
GENERAL								
ST. SUP. SPECIAL								
FEDERAL								
OTHER								
<b>SUBSIDIES</b>								
GENERAL								
ST. SUP. SPECIAL								
FEDERAL								
OTHER								
<b>TOTAL</b>	1,565,060			35,000	15,000	5,000	55,000	1,620,060

FUNDING

GENERAL FUNDS	1,540,000			35,000	15,000	5,000	55,000	1,595,000
ST. SUP. SPCL FUNDS								
FEDERAL FUNDS								25,060
OTHER SP. FUNDS	25,060							25,060
<b>TOTAL</b>	1,565,060			35,000	15,000	5,000	55,000	1,620,060

POSITIONS

GENERAL FTE	13.00							13.00
ST. SUP. SPCL. FTE								
FEDERAL FTE								
OTHER SP. FTE								
<b>TOTAL</b>	13.00							13.00

PRIORITY LEVEL :

				1	2	3		
--	--	--	--	---	---	---	--	--

PROGRAM DECISION UNITS

<b>EXPENDITURES</b>							
<b>SALARIES</b>							
GENERAL							
ST. SUP. SPECIAL							
FEDERAL							
OTHER							
<b>TRAVEL</b>							
GENERAL							
ST. SUP. SPECIAL							
FEDERAL							
OTHER							
<b>CONTRACTUAL</b>							
GENERAL							
ST. SUP. SPECIAL							
FEDERAL							
OTHER							
<b>COMMODITIES</b>							
GENERAL							
ST. SUP. SPECIAL							
FEDERAL							
OTHER							
<b>CAPTITAL-OTE</b>							
GENERAL							
ST. SUP. SPECIAL							
FEDERAL							
OTHER							
<b>EQUIPMENT</b>							
GENERAL							
ST. SUP. SPECIAL							
FEDERAL							
OTHER							
<b>VEHICLES</b>							
GENERAL							
ST. SUP. SPECIAL							
FEDERAL							
OTHER							
<b>WIRELESS DEV</b>							
GENERAL							
ST. SUP. SPECIAL							
FEDERAL							
OTHER							
<b>SUBSIDIES</b>							
GENERAL							
ST. SUP. SPECIAL							
FEDERAL							
OTHER							
<b>TOTAL</b>							

**FUNDING**

GENERAL FUNDS							
ST. SUP. SPCL FUNDS							
FEDERAL FUNDS							
OTHER SP. FUNDS							
<b>TOTAL</b>							

**POSITIONS**

GENERAL FTE							
ST. SUP. SPCL. FTE							
FEDERAL FTE							
OTHER SP. FTE							
<b>TOTAL</b>							

**PRIORITY LEVEL :**

--	--	--	--	--	--	--	--



## PROGRAM NARRATIVE

Program Data Collected in Accordance with the Mississippi Performance Budget and Strategic Planning Act of 1994  
(To Accompany Form MBR-1-03)

Gaming Commission

1 - Riverboat Gaming

Name of Agency

Program Name

## I. Program Description:

The Mississippi Gaming Commission is charged with enforcing the law and regulating casinos with regard to the Mississippi Gaming Control Act (MS Code Ann. 1972 75-76-1 through 75-76-313).

## II. Program Objective:

The Mississippi Gaming Commission seeks to maintain the integrity of the gaming industry in Mississippi. This is achieved in a two-fold method: (1) Maintain the integrity of the gaming property and (2) Maintain the integrity of the gaming patron. Current program activities as supported by the funding (FY 21 Estimated & FY 22 increase for continuations) of MBR-1-03.

## Salaries:

The MS Gaming Commission (MGC) request level funding in the major object category of salaries. A large portion of our employees are Law Enforcement personnel. In fact, 58 of our 101 filled PINS are certified Law Enforcement agents. The MGC currently has a competitive law enforcement series which allows for a better career ladder for all our agents in both the Riverboat Gaming and Charitable Gaming programs. The agents ready to move up the career ladder have met the extra educational and experience requirements. The MGC can maintain the career ladder with level funding.

## Travel:

The Mississippi Gaming Commission seeks an increase of \$58,263 in General Funds in this major object category. This amount allows the agency to recover from the FY 2021 budget cuts and is the same amount requested for Fiscal Years 2020 and 2021. The MGC is able to maintain current operations with this funding and the Special Fund pass through.

## Contractual:

The Mississippi Gaming Commission seeks an increase of \$166,085 in General Funds in this major object category. This amount allows the agency to recover from the FY 2021 budget cuts and is the same amount requested for Fiscal Years 2020 and 2021. The MGC is able to maintain current operations with this funding and the Special Fund pass through. The MGC received a sub-grant from DPS. The Other Special Funds comes from a grant from the US Department of Justice through the MS Department of Public Safety. An increase of \$130,000 is needed to replace an outdated records system. The system that is now in use no longer has maintenance support, has not been updated since 2012, and will not allow our agents to telework as needed during this COVID-19 pandemic.

## Commodities:

The Mississippi Gaming Commission seeks an increase of \$57,569 in General Funds and a decrease of \$18,528 in Special Funds in this major object category. The net effect is an overall increase of \$39,041. The MGC is not able to maintain current operations with level funding. The agency has withstood budget cuts, but needs to build its commodities back to a reasonable level. The Other Special Funds comes from a grant from the US Department of Justice through the MS Department of Public Safety. This amount allows the agency to recover from the FY 2021 budget cuts and is the same amount requested for Fiscal Years 2020 and 2021. The MGC is able to maintain current operations with this funding and the Special Fund pass through.

## Equipment:

The Mississippi Gaming Commission seeks an increase in General Fund money and a decrease in Special Fund for a net increase of \$59,841 in this major object category. The Other Special Funds comes from a grant from the US Department of Justice through the MS Department of Public Safety. This amount allows the agency to recover from the FY 2021 budget cuts and is the same amounts requested for Fiscal Years 2020 and 2021. The MGC is able to maintain current operations with this funding and the Special Fund pass through. See overall budget narrative for more details.

## Vehicles:

The Mississippi Gaming Commission seeks an increase of \$60,000 in General Funds and an increase of \$75,000 in Special Funds for a total increase of \$135,000. The MGC was unable to purchase any vehicles in FY 2019, 2020 or 2021. In order to keep our fleet in good working order, purchases must be made in FY 2022.

## Subsidies, loans &amp; grants:

The Mississippi Gaming Commission seeks no money in this major object category.

**PROGRAM NARRATIVE**

Program Data Collected in Accordance with the Mississippi Performance Budget and Strategic Planning Act of 1994  
(To Accompany Form MBR-1-03)

III. Current program activities as supported by the funding in Columns 6-15 (FY 2021 & FY 2022 Increase/Decrease for continuations) of MBR-1-03 and designated Budget Unit Decisions columns of MBR-1-03-A:

(D) Travel:

The Mississippi Gaming Commission seeks an increase in General Fund money of \$58,263 in this major object category. See overall budget narrative for details. The MGC is able to maintain current operations with this funding.

(E) Contractual Services:

The Mississippi Gaming Commission seeks an increase of \$166,085 of General Funds and an increase of \$130,000 of Other Special Funds in this major object category. The MGC is not able to maintain current operations with level funding. The agency has withstood budget cuts but needs to build its contractual services back to a reasonable level. The Other Special Funds comes from a grant from the US Department of Justice through the MS Department of Public Safety.

(F) Commodities:

The Mississippi Gaming Commission seeks an increase of \$57,569 in General Funds and a decrease of \$18,528 in Special Funds in this major object category. The net effect is an overall increase of \$39,041. The MGC is not able to maintain current operations with level funding. The agency has withstood budget cuts but needs to build its commodities back to a reasonable level. The Other Special Funds comes from a grant from the US Department of Justice through the MS Department of Public Safety.

(G) Equipment:

The Mississippi Gaming Commission seeks an increase in General Fund money and a decrease in Special Fund for a net increase of \$59,841 in this major object category. See overall budget narrative for details. The MGC is able to maintain current operations with this funding. The Other Special Funds comes from a grant from the US Department of Justice through the MS Department of Public Safety.

(H) Vehicles:

The Mississippi Gaming Commission seeks an increase of \$60,000 of General Funds and an increase of \$75,000 of Special Funds in this major object category. The MGC was unable to purchase any vehicles in FY 2019, 2020 or 2021. In order to keep our fleet in good working order, purchases must be made in FY 2022.

**PROGRAM NARRATIVE**

Program Data Collected in Accordance with the Mississippi Performance Budget and Strategic Planning Act of 1994  
(To Accompany Form MBR-1-03)

Gaming Commission

2 - Charitable Bingo

Name of Agency

Program Name

**I. Program Description:**

The Mississippi Gaming Commission is charged with enforcing the law and regulating all charitable bingo operations pursuant to the Charitable Bingo Act (MS Code Ann. 1972, sections 97-33-51 through 97-33-203).

**II. Program Objective:**

The Mississippi Gaming Commission seeks to maintain the integrity of the gaming industry in Mississippi. This is achieved in a two-fold method: (1) Maintain the integrity of the gaming property and (2) Maintain the integrity of the gaming patron. Current program activities as supported by the funding (FY 21 Estimated & FY 22 increase for continuations) of MBR-1-03.

**Salaries:**

The MS Gaming Commission (MGC) request no additional compensation in the major object category of salaries in this program for FY 2022. There are no Charitable Bingo Agents expected to move up the career ladder at that time. The MGC is able to maintain current operations with this funding.

**Travel:**

The Mississippi Gaming Commission seeks an increase in General Funds and a decrease in Special Funds in this major object category for a net increase of \$35,000. This amount allows the agency to recover from the FY 2021 budget cuts and is the same amounts requested for Fiscal Years 2020 and 2021. The MGC is able to maintain current operations with this funding and the Special Fund pass through.

**Contractual:**

The Mississippi Gaming Commission seeks an increase in General Funds and a decrease in Special Funds in this major object category for a net increase of \$15,000. This amount allows the agency to recover from the FY 2021 budget cuts and is the same amounts requested for Fiscal Years 2020 and 2021. The MGC is able to maintain current operations with this funding and the Special Fund pass through.

**Commodities:**

The Mississippi Gaming Commission seeks an increase in General Funds and a decrease in Special Funds in this major object category for a net increase of \$5,000. This amount allows the agency to recover from the FY 2021 budget cuts and is the same amounts requested for Fiscal Years 2020 and 2021. The MGC is able to maintain current operations with this funding and the Special Fund pass through.

**Equipment:**

The Mississippi Gaming Commission seeks no change in General Funds or Special Funds in this major object category. The MGC is able to maintain current operations with this funding and the Special Fund pass through.

**Vehicles:**

The Mississippi Gaming Commission seeks no change in this major object category. The MGC is able to maintain current operations with this funding and the Special Fund pass through.

**Subsidies, loans & grants:**

The Mississippi Gaming Commission seeks no change in this major object category. The MGC is able to maintain current operations with level funding.

**III. Current program activities as supported by the funding in Columns 6-15 (FY 2021 & FY 2022 Increase/Decrease for continuations) of MBR-1-03 and designated Budget Unit Decisions columns of MBR-1-03-A:****(D) Travel:**

The Mississippi Gaming Commission seeks an increase in General Fund money of \$35,000 in this major object category. See overall budget narrative for details. The MGC is able to maintain current operations with this funding.

**(E) Contractual Services:**

**PROGRAM NARRATIVE**

Program Data Collected in Accordance with the Mississippi Performance Budget and Strategic Planning Act of 1994  
(To Accompany Form MBR-1-03)

The Mississippi Gaming Commission seeks an increase in General Fund money of \$15,000 in this major object category. See overall budget narrative for details. The MGC is able to maintain current operations with this funding.

(F) Commodities:

The Mississippi Gaming Commission seeks an increase in General Fund money of \$5,000 in this major object category. See overall budget narrative for details. The MGC is able to maintain current operations with this funding.

**Elements of Quality Program Design**

For the Evaluation of Requests to Fund New Programs or New Activity in an Existing Program  
(To Accompany Form MBR-1-03A)

---

**PROGRAM PERFORMANCE MEASURES**

Program Data Collected in Accordance with the Mississippi Performance Budget and Strategic Planning Act of 1994

Gaming Commission (182-00)

1 - Riverboat Gaming

Name of Agency

PROGRAM NAME

**PROGRAM OUTPUTS:** (This is the measure of the process necessary to carry on the goals and objectives of this program. This is the volume produced, i.e., how many people served, how many documents generated.)

	FY 2020 APPRO	FY 2020 ACTUAL	FY 2021 ESTIMATED	FY 2022 PROJECTED
1 Casinos Regulated (Number of)	28.00	26.00	26.00	26.00
2 Work Permits Processed (Number of)	7,200.00	5,603.00	8,000.00	7,200.00
3 Investigations - Scheduled (Number of)	115.00	96.00	115.00	115.00
4 Compliance Audits Opened (Number of)	15.00	12.00	15.00	15.00
5 Corporate Securities Investigations Opened (Number of)	30.00	32.00	30.00	30.00
6 Casino Inspections (Number of)	180.00	160.00	180.00	180.00
7 Illegal Machines Destroyed/Confiscated (Number of)	100.00	147.00	100.00	100.00
8 Gaming Device Evaluations (Number of)	960.00	827.00	900.00	900.00
9 Annual State Riverboat Gaming Revenues (\$)	2,169,380,793.	1,796,272,939.	2,000,000,000.	2,000,000,000.

**PROGRAM EFFICIENCIES:** (This is the measure of the cost, unit cost or productivity associated with a given outcome or output. This measure indicates linkage between services and funding, i.e., cost per investigation, cost per student or number of days to complete investigation.)

	FY 2020 APPRO	FY 2020 ACTUAL	FY 2021 ESTIMATED	FY 2022 PROJECTED
1 Average Cost per Employee to Total State Riverboat Gaming Revenues (\$)	19,198,060.00	16,182,639.00	16,025,457.00	16,025,457.00

**PROGRAM OUTCOMES:** (This is the measure of the quality or effectiveness of the services provided by this program. This measure provides an assessment of the actual impact or public benefit of your agency's actions. This is the results produced, i.e., increased customer satisfaction by x% within a 12-month period, reduce the number of traffic fatalities due to drunk drivers within a 12-month period.)

	FY 2020 APPRO	FY 2020 ACTUAL	FY 2021 ESTIMATED	FY 2022 PROJECTED
1 Work Permits Issued (Number of)	7,200.00	5,603.00	8,000.00	7,200.00
2 Investigations Completed (Number of)	115.00	96.00	115.00	115.00
3 Audits Completed (Number of)	15.00	12.00	15.00	15.00
4 Corporate Investigations Completed (Number of)	30.00	32.00	30.00	30.00



**PROGRAM PERFORMANCE MEASURES**

Program Data Collected in Accordance with the Mississippi Performance Budget and Strategic Planning Act of 1994

Gaming Commission (182-00)

2 - Charitable Bingo

Name of Agency

PROGRAM NAME

PROGRAM OUTPUTS: (This is the measure of the process necessary to carry on the goals and objectives of this program. This is the volume produced, i.e., how many people served, how many documents generated.)

	FY 2020 APPRO	FY 2020 ACTUAL	FY 2021 ESTIMATED	FY 2022 PROJECTED
1 Bingo Applications Received (Number of)	50.00	52.00	11.00	50.00
2 Inspections Conducted (Number of)	1,191.00	781.00	800.00	800.00
3 Audits Conducted (Number of)	31.00	19.00	30.00	30.00
4 Bingo Halls Regulated (Number of)	68.00	68.00	68.00	68.00
5 Gross Charitable Bingo Revenue (\$)	90,000,000.00	69,613,305.00	80,000,000.00	80,000,000.00
6 New Bingo Halls Opened (Number of)	2.00	2.00	3.00	3.00

PROGRAM EFFICIENCIES: (This is the measure of the cost, unit cost or productivity associated with a given outcome or output. This measure indicates linkage between services and funding, i.e., cost per investigation, cost per student or number of days to complete investigation.)

	FY 2020 APPRO	FY 2020 ACTUAL	FY 2021 ESTIMATED	FY 2022 PROJECTED
1 Cost per Bingo Hall to Agency Charitable Bingo Expenditures (\$)	15,726.00	23,345.00	23,016.00	23,824.00
2 Average Cost per Employee to Total State Charitable Bingo Revenues (\$)	5,000,000.00	4,350,832.00	4,676,905.00	4,676,905.00
3 Cost of Agency Resources Utilized on Opening New Hall (\$)	0.00	0.00	0.00	0.00
4 Audits to Halls, Distributors & Manufacturers (Number of)	31.00	19.00	30.00	30.00
5 Inspections to Halls, Distributors and Manufacturers (Number of)	1,191.00	781.00	800.00	800.00

PROGRAM OUTCOMES: (This is the measure of the quality or effectiveness of the services provided by this program. This measure provides an assessment of the actual impact or public benefit of your agency's actions. This is the results produced, i.e., increased customer satisfaction by x% within a 12-month period, reduce the number of traffic fatalities due to drunk drivers within a 12-month period.

	FY 2020 APPRO	FY 2020 ACTUAL	FY 2021 ESTIMATED	FY 2022 PROJECTED
1 Applications Processed (Number of)	50.00	52.00	50.00	50.00
2 Bingo Halls Reporting (Number of)	60.00	68.00	68.00	68.00

## PROGRAM 3% GENERAL FUND REDUCTION AND NARRATIVE EXPLANATION

Gaming Commission (182 00)

	Fiscal Year 2021 Funding			FY 2021 GF PERCENT REDUCED
	Total Funds	Reduced Amount	Reduced Funding Amount	
Program Name: (1) Riverboat Gaming				
General	6,431,467	(192,944)	6,238,523	(3.00%)
State Support Special				
Federal				
Other Special	741,151		741,151	
TOTAL	7,172,618	(192,944)	6,979,674	
Narrative Explanation:				
As a small agency, a substantial cut is best absorbed distributed among major object categories, for both programs. The categories of Salaries, Equipment, Commodities, Contractual and Travel will all absorb any reduction. A reduction in salaries will first mean that no one can advance along the career ladder in place for agents and accountants. If the MGC receives anymore budget cuts, it will definitely mean layoffs. The agency has reduced expenses as much as possible, and needs to recover the 5% cut from FY 2021 to resume normal operations. Travel allows the MGC Investigation Division to conduct thorough investigations of investors and key employees. This category is directly related to the agency's revenue generating ability. Any reduction in Equipment, Commodities, or Contractual will impact the activities necessary for continued day to day operation				

<b>Program Name: (2) Charitable Bingo</b>				
General	1,540,000	(46,200)	1,493,800	(3.00%)
State Support Special				
Federal				
Other Special	25,060		25,060	
<b>TOTAL</b>	<b>1,565,060</b>	<b>(46,200)</b>	<b>1,518,860</b>	
<b>Narrative Explanation:</b>				
As a small agency, a substantial cut is best absorbed distributed among major object categories, for both programs. The categories of Salaries, Equipment, Commodities, Contractual and Travel will all absorb any reduction. A reduction in salaries will first mean that no one can advance along the career ladder in place for agents and accountants. If the MGC receives anymore budget cuts, it will definitely mean layoffs. The agency has reduced expenses as much as possible, and needs to recover the 5% cut from FY 2021 to resume normal operations. Travel allows the MGC Investigation Division to conduct thorough investigations of investors and key employees. This category is directly related to the agency's revenue generating ability. Any reduction in Equipment, Commodities, or Contractual will impact the activities necessary for continued day to day operation				

<b>Program Name: (99) Summary of All Programs</b>				
General	7,971,467	(239,144)	7,732,323	(3.00%)
State Support Special				
Federal				
Other Special	766,211		766,211	
<b>TOTAL</b>	<b>8,737,678</b>	<b>(239,144)</b>	<b>8,498,534</b>	

MS GAMING COMMISSION (MGC) MEMBERS

Gaming Commission (182-00)

Name of Agency

A. Explain Rate and manner in which board members are reimbursed:

Commissioners are paid on a per diem basis @ \$40 per day for meetings.

B. Estimated number of meetings FY 2021:

The MGC holds twelve public commission meetings annually.

C. Board Members	City, Town, Residence	Appointed By	Date Appointed	Length of Term
1. Jerry L. Griffith, Sr.	Gulfport, MS	Gov. Phil Bryant	09/30/2016	4 years
2. Major General (R) Al Hopkins	Gulfport, MS	Gov. Phil Bryant	10/01/2017	4 years
3. Tom Gresham	Indianola, MS	Gov. Phil Bryant	10/01/2019	4 years

Identify Statutory Authority (Code Section or Executive Order Number)\*

*Miss. Code Ann Section 75-76-9 (10)*

\*If Executive Order, please attach copy.

**SCHEDULE B  
CONTRACTUAL SERVICES**

Gaming Commission (182-00)

Name of Agency

MINOR OBJECT OF EXPENDITURE	(1) Actual Expenses FY Ending June 30, 2020	(2) Estimated Expenses FY Ending June 30, 2021	(3) Requested for FY Ending June 30, 2022
<b>A. Tuition, Rewards &amp; Awards (61050xxx-61080xxx)</b>			
61050000 Tuition Expenses	1,027		12,025
61060000 Employee Training	9,693	5,000	15,000
61070000 Travel Related Registration	200		
<b>Total</b>	<b>10,920</b>	<b>5,000</b>	<b>27,025</b>
<b>B. Transportation &amp; Utilities (61100xxx-61200xxx)</b>			
61100000 Transportation of Goods	4,577	7,000	13,500
61110000 Postal	3,101	5,000	7,500
61200000 Utilities	11,103	16,000	17,500
<b>Total</b>	<b>18,781</b>	<b>28,000</b>	<b>38,500</b>
<b>D. Rents (61400xxx-61490xxx)</b>			
61400000 Building & Floor Space Rental	115,000	114,000	115,000
61420000 Equipment Rental	22,090	24,000	25,000
<b>Total</b>	<b>137,090</b>	<b>138,000</b>	<b>140,000</b>
<b>E. Repairs &amp; Service (61500xxx)</b>			
61500000 Repair & Maintenance Services	33,503	65,000	66,500
<b>Total</b>	<b>33,503</b>	<b>65,000</b>	<b>66,500</b>
<b>F. Fees, Professional &amp; Other Services (6161xxx-61699xxx)</b>			
61600000 Inter-Agency Fees	96,356	214,389	215,000
61610000 Contract Worker Payroll	21,240	20,000	20,000
61625000 Contract Worker Payroll Match	5,321	1,600	1,600
61670000 Legal & Related Services	2,457	8,051	12,600
61676000 Settlement Payments - Other Than Attorney Fee	7,500		
61680000 Medical Services	535	2,000	4,000
61690000 Professional Fees & Services	6,248	8,260	17,660
<b>Total</b>	<b>139,657</b>	<b>254,300</b>	<b>270,860</b>
<b>G. Other Contractual Services (61700xxx-61790xxx, 61900xxx)</b>			
61700000 Insurance Fees & Services	18,668	18,500	35,500
61710000 Membership Dues	3,720	1,500	5,000
61735000 Salvage Demolition & Removal Services	1,694	5,000	5,500
61900000 P-Card Contractual Services	15,444	25,000	35,000
<b>Total</b>	<b>39,526</b>	<b>50,000</b>	<b>81,000</b>

**SCHEDULE B  
CONTRACTUAL SERVICES**

Gaming Commission (182-00)

Name of Agency

MINOR OBJECT OF EXPENDITURE	(1) Actual Expenses FY Ending June 30, 2020	(2) Estimated Expenses FY Ending June 30, 2021	(3) Requested for FY Ending June 30, 2022
-----------------------------	--	---	--

**H. Information Technology (61800xxx-61890xxx)**

61806000 Data Line & Network Charges	27,418	27,000	43,000
61818000 Cellular Usage Time	12,801	12,000	15,000
61836000 Outsourced IT Solutions	19,629	10,000	45,000
61839000 Software Acq. Installation & Maintenance	8,649	5,000	160,000
61848000 Maintenance IT Equipment Outside Vendor			15,500
61850000 Payments to ITS	28,725	30,000	30,000
<b>Total</b>	<b>97,222</b>	<b>84,000</b>	<b>308,500</b>

**I. Other (61910xxx-61990xxx)**

61910000 Petty Cash Expenses	3,126	5,000	8,000
<b>Total</b>	<b>3,126</b>	<b>5,000</b>	<b>8,000</b>

**Grand Total**

(Enter on Line 1-B of Form MBR-1)

	<b>479,825</b>	<b>629,300</b>	<b>940,385</b>
--	----------------	----------------	----------------

**Funding Summary:**

General Funds	350,215	394,300	575,385
State Support Special Funds			
Federal Funds			
Other Special Funds	129,610	235,000	365,000
<b>Total Funds</b>	<b>479,825</b>	<b>629,300</b>	<b>940,385</b>

**SCHEDULE C  
COMMODITIES**

Gaming Commission (182-00)

Name of Agency

MINOR OBJECT OF EXPENDITURE	(1) Actual Expenses FY Ending June 30, 2020	(2) Estimated Expenses FY Ending June 30, 2021	(3) Requested for FY Ending June 30, 2022
<b>A. Maintenance &amp; Constr. Materials &amp; Supplies (62000xxx, 62015xxx)</b>			
61050000 Tuition Expense	4,640		5,000
61060000 Employee Training	2,534		5,000
61070000 Travel Related Registration	200		
<b>Total</b>	<b>7,374</b>		<b>10,000</b>
<b>B. Printing &amp; Office Supplies &amp; Materials (62010xxx, 62085xxx, 62100xxx, 62125xxx, 62400xxx)</b>			
62085000 Office supplies and materials	23,136	15,500	31,000
62100000 Printing supplies	2,826	2,000	5,000
62400000 Furniture and equipment	18,743	5,500	10,500
<b>Total</b>	<b>44,705</b>	<b>23,000</b>	<b>46,500</b>
<b>C. Equipment Repair Parts, Supplies &amp; Acces. (6205xxxx, 62072xxx, 62110xxx, 62115xxx, 62120xxx, 62130xxx)</b>			
62050000 Fuel	35,335	34,536	37,536
62055000 Fuel card repairs and maintence	18,682	15,442	20,000
62115000 Parts & access - office, IT, other equipment	33,234	7,000	5,000
62130000 Tires and tubes	1,569	2,500	2,500
<b>Total</b>	<b>88,820</b>	<b>59,478</b>	<b>65,036</b>
<b>D. Professional &amp; Sci. Supplies and Materials (62025xxx, 62030xxx, 62070xxx, 62095xxx, 62105xxx, 6212xxxx)</b>			
62070000 Lab and medical supplies	1,527	2,000	700
<b>Total</b>	<b>1,527</b>	<b>2,000</b>	<b>700</b>
<b>E. Other Supplies &amp; Materials (62005xxx, 62015xxx, 62020xxx, 62035xxx, 62040xxx, 62045xxx, 62060xxx, 62065xxx, 62075xxx-62080xxx, 62090xxx, 62115xxx, 62135xxx, 62140xxx, 62405xxx, 62415xxx, 62500xxx-62999xxx)</b>			
62005000 Ammunition	13,800	14,900	5,000
62060000 Janitorial	1,572	2,000	3,472
62135000 Uniforms and apparel	20,066	10,000	17,000
62405000 Vehicle equipment	2,910	3,000	3,000
62900000 Procurement card - commodity purchases	36,703	63,000	70,711
62910000 Petty cash expenses - commodities	807	300	300
<b>Total</b>	<b>75,858</b>	<b>93,200</b>	<b>99,483</b>
<b>Grand Total</b> (Enter on Line 1-C of Form MBR-1)	<b>218,284</b>	<b>177,678</b>	<b>221,719</b>
<b>Funding Summary:</b>			
General Funds	159,867	127,678	190,247
State Support Special Funds			
Federal Funds			



**SCHEDULE C  
COMMODITIES**

Gaming Commission (182-00)

Name of Agency

MINOR OBJECT OF EXPENDITURE	(1) Actual Expenses FY Ending June 30, 2020	(2) Estimated Expenses FY Ending June 30, 2021	(3) Requested for FY Ending June 30, 2022
Other Special Funds	58,417	50,000	31,472
<b>Total Funds</b>	<b>218,284</b>	<b>177,678</b>	<b>221,719</b>

**SCHEDULE D-1  
CAPITAL OUTLAY  
OTHER THAN EQUIPMENT**

Gaming Commission (182-00)

Name of Agency

MINOR OBJECT OF EXPENDITURE	(1) Actual Expenses FY Ending June 30, 2020	(2) Estimated Expenses FY Ending June 30, 2021	(3) Requested for FY Ending June 30, 2022
-----------------------------	--	---	--

<b>Grand Total</b> <i>(Enter on Line 1-D-1 of Form MBR-1)</i>			
--	--	--	--

<b>Funding Summary:</b>			
General Funds			
State Support Special Funds			
Federal Funds			
Other Special Funds			
<b>Total Funds</b>			

**SCHEDULE D-2  
CAPITAL OUTLAY EQUIPMENT**

Gaming Commission (182-00)

Name of Agency

EQUIPMENT BY ITEM	Act. FY Ending June 30, 2020		Est. FY Ending June 30, 2021		Req. FY Ending June 30, 2022	
	No. of Units	Total Cost	No. of Units	Total Cost	No. of Units	Total Cost

**C. Office Machines, Furniture, Fixtures, Equip. (63200xxx)**

Office Desk			10	12,000	6	7,984
Shredder			3	750	1	350
Conference Room Table			1	2,750		
Dual side card printer for badges			2	2,400		
Zoom identity cameras for badges			2	2,800		
Receptionist Desk					1	3,500
Postage Meter & Scales					2	4,000
<b>Total</b>				<b>20,700</b>		<b>15,834</b>

**D. IS Equipment (DP & Telecommunications) (63200xxx)**

Desktop Computer			10	11,800	10	14,000
Scanner			1	500	2	1,000
Laserjet Printer			5	3,500	6	2,200
Computer Monitors					13	2,002
Computer Keyboards			6	500	6	500
Laptop Computers			10	13,000	38	52,200
Unitrends Data Protection Unit					1	13,105
<b>Total</b>				<b>29,300</b>		<b>85,007</b>

**F. Other Equipment (63200xxx)**

Glock 45	67	28,710				
Glock 43X	5	1,940				
Television	1	400				
Coverttrack GPS Receiver					2	9,000
<b>Total</b>		<b>31,050</b>				<b>9,000</b>

**Grand Total**

(Enter on Line 1-D-2 of Form MBR-1)

31,050

50,000

109,841

**Funding Summary:**

General Funds	400		67,839
State Support Special Funds			
Federal Funds			
Other Special Funds	30,650	50,000	42,002
<b>Total Funds</b>	<b>31,050</b>	<b>50,000</b>	<b>109,841</b>

**SCHEDULE D-3  
PASSENGER/WORK VEHICLES**

Gaming Commission (182-00)

Name of Agency

MINOR OBJECT OF EXPENDITURE	Vehicle Inventory June 30, 2020	Act. FY Ending June 30, 2020		Est. FY Ending June 30, 2021		Req. FY Ending June 30, 2022	
		No. of Units	Total Cost	No. of Units	Total Cost	No. of Units	Total Cost

**A. Passenger & Work Vehicles (63300xxx)**

63300100 Passenger Car	47					4	135,000
<b>Total (A)</b>	<b>47</b>					<b>4</b>	<b>135,000</b>

**GRAND TOTAL**

(Enter on Line 1-D-3 of Form MBR-1)

							<b>135,000</b>
--	--	--	--	--	--	--	----------------

**Funding Summary:**

General Funds				60,000
State Support Special Funds				
Federal Funds				
Other Special Funds				75,000
<b>Total Funds</b>				<b>135,000</b>

**SCHEDULE D-4  
WIRELESS COMMUNICATION DEVICES**

Gaming Commission (182-00)

Name of Agency

MINOR OBJECT OF EXPENDITURE	Device Inventory June 30, 2020	Act. FY Ending June 30, 2020		Est. FY Ending June 30, 2021		Req. FY Ending June 30, 2022	
		No. of Devices	Actual Cost	No. of Devices	Estimated Cost	No. of Devices	Requested Cost

<b>Grand Total</b> <i>(Enter on Line 1-D-4 of Form MBR-1)</i>			
--	--	--	--

<b>Funding Summary:</b>			
General Funds			
State Support Special Funds			
Federal Funds			
Other Special Funds			
<b>Total Funds</b>			

**SCHEDULE E**  
**SUBSIDIES, LOANS & GRANTS**

Gaming Commission (182-00)

Name of Agency

MINOR OBJECT OF EXPENDITURE	(1) Actual Expenses FY Ending June 30, 2020	(2) Estimated Expenses FY Ending June 30, 2021	(3) Requested for FY Ending June 30, 2022
<b>Grand Total</b> <i>(Enter on Line 1-E of Form MBR-1)</i>			
<b>Funding Summary:</b>			
General Funds			
State Support Special Funds			
Federal Funds			
Other Special Funds			
<b>Total Funds</b>			

**NARRATIVE  
2022 BUDGET REQUEST**

Gaming Commission (182-00)

---

Name of Agency

The Mississippi Gaming Commission (MGC) seeks to maintain a high level of regulatory services to fulfill the responsibilities placed on the Agency in the Gaming Control Act. This request will allow the MGC to sustain staffing capability and capacity in order to enhance and maintain the high level of integrity the State of Mississippi has established in the gaming industry's regulatory environment. A lack of funding leads to staffing turnover and shortages, limited travel and contractual funds to adequately train and develop law enforcement and auditing staff, and limited commodity funds interrupt the continuation of business.

The MGC requests a budget of \$9,380,908 for Fiscal Year 2022. This is a 7.36% increase. This amount allows the agency to recover from the FY 2021 budget cuts and to utilize some much needed grant funds. There are no funds included for any new operations or new personnel actions. The MGC is able to maintain current operations with this funding and the Special Fund pass through.

The \$9,380,908 requested budget is to be funded as follows:

- General Fund \$ 8,436,223
- Special Fund \$ 766,211
- Coronavirus Grant \$ 178,474

Prior to FY 2017 the MGC exclusively relied on Special Fund Revenues to fund the Agency. These special funds were derived from investigative fees, permits, tests, and audits performed by the MGC. Each licensed casino also pays an inclusive investigative fee on a quarterly basis. In July 2020, the MGC received a sub-grant from the MS Department of Public Safety. The Coronavirus grant is from the US Department of Justice sub-granted to the MGC through the MS Department of Public Safety.

The Mississippi Gaming Commission requests to have language in the Fiscal Year 2022 appropriation bill to collect and deposit up to \$766,211 into the 3187 Special Fund. This is the same amount as FY 2020 and FY 2021. This money will be collected from work permit fees, investigation fees and seized funds.

**PERSONAL SERVICES:**

The Mississippi Gaming Commission is requesting no increase in the Major Object Category Personal Services. The Agency will continue to be fiscally responsible in the area of employee salaries. The MGC feels that any career ladder movement can be made without asking for additional compensation in FY 2022.

**TRAVEL:**

The Mississippi Gaming Commission requests an increase of \$93,263 in the Major Object Category Travel for Fiscal Year 2022. It should be noted that much of the revenue deposited by the MGC is generated from the travel conducted by the Investigations Division. The Investigations Division is charged with investigating all gaming, manufacturer and distributor's licenses, findings of suitability, key employee licenses, and reporting all material facts to the Commission for each person or business who applies to participate in the gaming industry in MS. The investigative process is ongoing and continuous by virtue of industry employee turnover, management changes, acquisitions and mergers in the gaming industry. This division travels more than any other and is responsible for all trips outside the United States and most of the trips outside of Mississippi. The MGC is asking for special fund authority related to the Investigation Division travels.

**CONTRACTUAL SERVICES:**

The Mississippi Gaming Commission requests an increase of \$311,085 in the Major Object Category Contractual Services for Fiscal Year 2022. Being an agency comprised mostly of law enforcement officers and accountants, specific training is mandatory in order for certifications to be maintained. The MGC also maintains several data bases that will require professional assistance in maintaining or upgrading. These items will not expand the MGC, but will only allow for maintaining the level of regulatory services necessary to carry out the responsibilities placed on the MGC in the Gaming Control Act. The majority of the increase in this category is for data processing and information services. This spending will come from the Coronavirus Grant Fund money. We anticipate receiving a sub-grant from the Dept. of Public Safety for this purpose.

The current case management system was developed by the Department of Information Technology Services in 2004. The last

**NARRATIVE**  
**2022 BUDGET REQUEST**

Gaming Commission (182-00)

Name of Agency

revision of this software occurred in 2012. The current system is a Visual Basic (SQL DB) Case Management application that experiences compatibility issues due to operating system upgrades that result in errors requiring unorthodox workaround solutions. This case management application is used by fifty-eight (58) law enforcement personnel and their supervisors to track and log investigative and criminal incidents that the Commission has jurisdiction to regulate statewide. It is also utilized by work permits to track actions taken on work permits issued by the Commission.

The Department of Information Technology Services no longer supports this software, and there is no provision for remote access. Physical connection to the agency network is required in order to utilize the case management system.

Deficiencies of the current case management system include, no remote access, inability to export case files in digital format, outdated software, random errors, no maintenance/support contract, no updates, inability to import or export documents or multimedia files, and no digital workflow process.

The query capability is so limited; it cannot be used as a thorough source of information. Therefore Agents of the Commission or any other law enforcement agencies requesting information are unable to obtain it. The only ways to query are by name, date, agent, social security number, incident and date of birth. This limits the amount of information that can be utilized and/or shared. There is no component in this system that allows a user to get a complete electronic file that can be utilized for a court or hearing. It is only basic information that can be recorded and then printed out and added to the hard copy files. Perhaps the biggest hurdle of all is there is no way to update the status of any case file electronically.

The majority of the fifty-eight (58) law enforcement personnel and their supervisors are not positioned for telework. Only six (6) mobile devices are assigned to the Northern, Central and Southern districts to be used by the agents on duty. The deficiencies in the current case management system have been brought to the forefront of our attention during the Covid 19 pandemic. This affects all of our law enforcement personnel in all divisions of our agency across the State of Mississippi. Without the ability for our agents to use this program remotely, much more personal protective equipment (PPE) needs to be provided as all these employees have to report to the offices and travel statewide.

**COMMODITIES:**

The Mississippi Gaming Commission requests an increase of \$44,041 in the Major Object Category Commodities. The Agency will continue to be fiscally responsible, but there is the need to recover from the budget cut of over 5% in FY 2021. A portion of this increase is to allow for expending the Coronavirus Grant Fund money.

This expenditure is for personal protective equipment (PPE) such as masks, hand sanitizers, gloves, disinfectant wipes and disinfectant sprays. Our law enforcement agents interact with the public more than any other employees of the entire agency. Even though a new case management system will improve efficiency and allow for most agents to rotate a teleworking schedule, it will not cease all public interactions. On a weekly basis, the MGC still greets the public for work permitting in each office: Jackson, Tunica and Biloxi. This may be upwards of one hundred casino employees per day that need fingerprinting and photographs. Those are close contact duties, and the MGC must provide PPE to each of our agents.

Some investigation interviews and all self-exclusion interviews are also done in person. While the Investigation division is trying to make everything electronic as much as possible, the interviews and paperwork associated with self-exclusions will remain in person. The three (3) Enforcement divisions in Jackson, Tunica and Biloxi will be able to do many job duties from home, but they will still be required to go into the casinos and casino surveillance rooms. The Charitable Gaming division is capable of completing all job duties via telework, but the agents still have to go into the bingo halls across the state.

The Mississippi Gaming Commission law enforcement agents are responsible for twenty-six (26) licensed casinos and sixty-eight (68) bingo halls. PPE is necessary for all the agents in order for the MGC to remain operational. The MGC has three offices statewide and must provide an adequate amount of supplies for all staff to do their jobs

**CAPITAL OUTLAY:**

**Other Than Equipment:**

The Mississippi Gaming Commission requests no increase in the Major Object Category Capital Outlay: Other Than Equipment for Fiscal Year 2022.



NARRATIVE  
2022 BUDGET REQUEST

Gaming Commission (182-00)

---

Name of Agency

Equipment:

The Mississippi Gaming Commission seeks an increase of \$59,841 in this Major Object Category Capital Outlay: Equipment for Fiscal Year 2022. The majority of this request is for expending the Coronavirus Grant Fund money. These equipment items are needed in order to keep a very minimum number of agents in the MGC offices located in Jackson, Biloxi and Tunica. All other law enforcement staff could effectively rotate a teleworking schedule while still having access to a functioning case management system.

Once the agency has enough laptops, scanners, printers and other necessary equipment, the MGC would like for all employees to only use agency equipment when teleworking. This is the best case scenario for our firewall and overall IT safety.

VEHICLES:

The Mississippi Gaming Commission requests an increase of \$135,000 in the Major Object Category Vehicles for Fiscal Year 2022. No monies were spent on vehicles in FY 2019 and FY 2020. No vehicle purchase are expected in FY 2021, but the Agency anticipates needing to replace some aging vehicles in FY 2022. The MGC foresees needing to replace the four (4) oldest cars in order to be able to maintain an effectively running fleet. Seized Funds will be the first source of money to purchase these vehicles, but General Funds will also be needed.

In order to carry out the responsibilities placed on the Agency by the Gaming Control Act, enforcement agents, auditors, and compliance officers must frequently drive to both casinos and charitable gaming facilities for regulatory purposes. These facilities are spread throughout Mississippi. Many vehicles in the Agency's fleet have reached high mileages, which in turn, increase the amount necessary for repairs and maintenance that have to be done. As of FY 2022, the agency has thirteen (13) vehicles with mileage over 100,000. The Agency recognizes the need to keep cars in a constant rotation and annually rid itself of older high mileage vehicles needing costly maintenance.

SUBSIDIES, LOANS, & GRANTS:

The Mississippi Gaming Commission requests no increase in the Major Object Category Subsidies, Loans, & Grants for Fiscal Year 2022

**OUT-OF-STATE TRAVEL  
FISCAL YEAR 2022**

Gaming Commission (182-00)

Name of Agency

Note: All expenditures recorded on this form must be totaled and said total must agree with the out-of-state travel amount indicated for FY 2020 on Form Mbr-1, line 1.A.2.b.

Employee's Name	Destination	Purpose	Travel Cost	Funding Source
ALEXANDER BRYAN	ATLANTA GA	INVESTIGATION	1,362	3318700000
ALEXANDER BRYAN	LOUISVILLE KY	INVESTIGATION	959	3318700000
ALEXANDER BRYAN	NEWARK NJ	INVESTIGATION	1,357	3318700000
ALEXANDER BRYAN	LAS VEGAS NV	INVESTIGATION	1,953	3318700000
ATKINSON MICHAEL	LAS VEGAS NV	SPORT BETTING REGULATION TRAINING	1,351	2218700000
BROWN KIMBERLY	MEMPHIS TN	FINANCIAL RECORDS TRAINING	540	2218700000
BROWN TERRY	ST LOUIS MO	INVESTIGATION	1,201	3318700000
BROWN TERRY	CHICAGO IL	INVESTIGATION	1,456	3318700000
BROWN TERRY	BOSTON MA	INVESTIGATION	694	3318700000
BROWN TERRY	CHICAGO IL	INVESTIGATION	1,545	3318700000
BROWN TERRY	FORT LAUDERDALE FL	INVESTIGATION	697	3318700000
BROWN TERRY	LAS VEGAS NV	INVESTIGATION	1,210	3318700000
CHOW LELAND	MEMPHIS TN	INVESTIGATIVE SKILLS TRAINING	695	2218700000
CLARK SHONDA	MEMPHIS TN	FINANCIAL RECORDS TRAINING	589	2218700000
DAVENPORT DENNIS	QUANTICO VA	FBI NATIONAL ACADEMY	2,500	2218700000
DODGE PATRICK	LAKE CHARLES LA	INVESTIGATIVE SKILLS TRAINING	288	2218700000
FULGHAM JOSH	POCAHONTAS AR	KRAV MAGA TRAINING	626	2218700000
GODFREY CHRIS	MEMPHIS TN	INVESTIGATIVE SKILLS TRAINING	820	2218700000
GODFREY WILLIAM	LAS VEGAS NV	GLOBAL GAMING EXPO	1,302	2218700000
HOUGH THOMAS	LAS VEGAS NV	INVESTIGATION	1,360	3318700000
HOUGH THOMAS	PHILADELPHIA PA	INVESTIGATION	2,245	3318700000
HOUGH THOMAS	BOSTON MA	INVESTIGATION	1,774	3318700000
HOUGH THOMAS	DENVER CO	INVESTIGATION	1,583	3318700000
HOUGH THOMAS	NEW BUFFALO MI	MIDWEST GAMING INVEST CONF	1,573	2218700000
HOUGH THOMAS	HIGHLAND CA	INVESTIGATION	1,774	3318700000
HOUGH THOMAS	LAS VEGAS NV	INVESTIGATION	1,559	3318700000
HOUGH THOMAS	ALEXANDRIA VA	INVESTIGATION	440	3318700000
MCDANIEL JAMES	LAS VEGAS NV	GLOBAL GAMING EXPO	1,474	2218700000
MCDANIEL JAMES	DESTIN FL	MS BAR CONVENTION	1,250	2218700000
MONROE JAMES	LAS VEGAS NV	SPORT BETTING REGULATION TRAINING	1,463	2218700000
PARSONS NATHANIEL	LAKE CHARLES LA	INVESTIGATIVE SKILLS TRAINING	205	2218700000

**OUT-OF-STATE TRAVEL  
FISCAL YEAR 2022**

Gaming Commission (182-00)

Name of Agency

Note: All expenditures recorded on this form must be totaled and said total must agree with the out-of-state travel amount indicated for FY 2020 on Form Mbr-1, line 1.A.2.b.

Employee's Name	Destination	Purpose	Travel Cost	Funding Source
POWELL SHERRI	MEMPHIS TN	INVESTIGATIVE SKILLS TRAINING	766	2218700000
ROBINSON UTOPIA	BATON ROUGE LA	FINANCIAL RECORDS TRAINING	463	2218700000
SESSUMS BLAKE	BATON ROUGE LA	FINANCIAL RECORDS TRAINING	638	2218700000
WATSON BRITTNEY	MEMPHIS TN	FINANCIAL RECORDS TRAINING	607	2218700000
WEEKS FREDDIE	LAS VEGAS NV	INVESTIGATION	1,504	3318700000
WEEKS FREDDIE	LOUISVILLE KY	INVESTIGATION	833	3318700000
WEEKS FREDDIE	SAN FRANCISCO CA	INVESTIGATION	2,425	3318700000
WONG EDWARD	CHICAGO IL	EGR NA MW BRIEFING 2019	851	2218700000
WONG EDWARD	LAS VEGAS NV	SPORT BETTING REGULATION TRAINING	1,630	2218700000
WOODS CARL	LAS VEGAS NV	INVESTIGATION	2,069	3318700000
WOODS CARL	NEW BUFFALO MI	MIDWEST GAMING INVEST CONF	1,383	3318700000
WOODS CARL	ATLANTA GA	INVESTIGATION	1,602	3318700000
WOODS CARL	LAS VEGAS NV	SUITABILITY INVESTIGATION	892	3318700000
WOODS CARL	LAS VEGAS NV	INVESTIGATION	2,826	3318700000
WOODS CARL	MEMPHIS TN	FINANCIAL RECORDS TRAINING	702	2218700000
<b>Total Out of State Cost</b>			<b>\$ 57,036</b>	

**FEES, PROFESSIONAL AND OTHER SERVICES**

Gaming Commission (182-00)

Name of Agency

TYPE OF FEE AND NAME OF VENDOR	Retired w/ PERS	(1) Actual Expenses FY Ending June 30, 2020	(2) Estimated Expenses FY Ending June 30, 2021	(3) Requested Expenses FY Ending June 30, 2022	Fund Source
<b>61610000 Contract Worker Payroll</b>					
Brad Hetherington/Investigative Services					
Comp. Rate: \$20 per hour	y	6,380	20,000	20,000	2218700000
Don Howarth/Charitable Gaming Enforcement					
Comp. Rate: \$20 per hour	y	14,860			2218700000
<b>Total 61610000 Contract Worker Payroll</b>		<b>21,240</b>	<b>20,000</b>	<b>20,000</b>	
<b>61625000 Contract Worker Payroll Match</b>					
Brad Hetherington/Investigation Services					
Comp. Rate: \$20 per hour	y	1,596	1,600	1,600	2218700000
Don Howarth/Charitable Gaming Enforcement					
Comp. Rate: \$20 per hour	y	3,725			2218700000
<b>Total 61625000 Contract Worker Payroll Match</b>		<b>5,321</b>	<b>1,600</b>	<b>1,600</b>	
<b>61600000 Inter-Agency Fees</b>					
Dept of Public Safety/fingerprinting					
Comp. Rate: \$11.25 State / \$20.75 Federal	n	92,160	210,000	210,000	3318700000
DFA/MMRS/MAGIC & SPAHRS					
Comp. Rate: annual fee	n	4,196	4,389	5,000	3318700000
<b>Total 61600000 Inter-Agency Fees</b>		<b>96,356</b>	<b>214,389</b>	<b>215,000</b>	
<b>61670000 Legal &amp; Related Services</b>					
Julie R Brown/Court Reporting					
Comp. Rate: \$346 per day	n	1,957	3,051	6,000	2218700000
Katherine Lusk/Court Reporting					
Comp. Rate: \$200 per day	n	500	5,000	6,000	2218700000
Stegall Notary/Notary Supplies					
Comp. Rate: \$150 per complete kit	n			600	2218700000
<b>Total 61670000 Legal &amp; Related Services</b>		<b>2,457</b>	<b>8,051</b>	<b>12,600</b>	
<b>61676000 Settlement Payments - Other Than Attorney Fee</b>					
Jackowiak Law Offices LLC/Plaintiff's counsel/settlement					
Comp. Rate: one time settlement	n	7,500			2218700000
<b>Total 61676000 Settlement Payments - Other Than Attorney Fee</b>		<b>7,500</b>			
<b>61680000 Medical Services</b>					
First Intermid Corp/drug testing / EKG					
Comp. Rate: 45 each / \$50 each	n	265	1,000	2,000	2218700000
MEA/drug test/ physical					
Comp. Rate: \$45 each / \$60 each	n	270	1,000	2,000	2218700000
<b>Total 61680000 Medical Services</b>		<b>535</b>	<b>2,000</b>	<b>4,000</b>	
<b>61690000 Professional Fees &amp; Services</b>					
Iron Mountain/Document Shredding					

# FEES, PROFESSIONAL AND OTHER SERVICES

Gaming Commission (182-00)

Name of Agency

TYPE OF FEE AND NAME OF VENDOR	Retired w/ PERS	(1) Actual Expenses FY Ending June 30, 2020	(2) Estimated Expenses FY Ending June 30, 2021	(3) Requested Expenses FY Ending June 30, 2022	Fund Source
Comp. Rate: \$20.70 per box	n	2,070	2,100	2,100	2218700000
J. Lisenbee/Security Systems					
Comp. Rate: \$360 per year	n	360	360	360	2218700000
Jackson Communications/Intercom Maintenance					
Comp. Rate: \$200 per call out	n			1,000	2218700000
Marketing Alliance/Website Support					
Comp. Rate: \$140 per hour	n	904	2,100	2,500	2218700000
MS Industries for the Blind/Business Cards					
Comp. Rate: \$43 per box	n	86	100	100	2218700000
Pileum/Support Services					
Comp. Rate: \$130 per hour	n	2,080	2,100	2,100	2218700000
Staffers Inc/Temporary Staffing					
Comp. Rate: \$11.68 per hour	n	748	1,500	2,000	2218700000
Windham & Lacy/Professional Services/ CPAs					
Comp. Rate: \$75 per hour	n			7,500	2218700000
Total 61690000 Professional Fees & Services		6,248	8,260	17,660	
<b>GRAND TOTAL</b>		<b>139,657</b>	<b>254,300</b>	<b>270,860</b>	

# VEHICLE PURCHASE DETAILS

Gaming Commission (182-00)

Name of Agency

Year	Model	Person(s) Assigned To	Vehicle Purpose/Use	Replacement Or New?	FY2022 Req. Cost
<b>Passenger Vehicles</b>					
<b>63300100 Passenger Car</b>					
2022	Mid-size Car	Jackson Car Pool	Law Enforcement	Replacement	33,750
2022	Mid-size Car	Jackson Car Pool	Law Enforcement	Replacement	33,750
2022	Mid-size Car	Jackson Car Pool	Law Enforcement	Replacement	33,750
2022	Mid-size Car	Jackson Car Pool	Law Enforcement	Replacement	33,750
<b>TOTAL</b>					<b>135,000</b>
<b>TOTAL VEHICLE REQUEST</b>					<b>135,000</b>

**VEHICLE INVENTORY  
AS OF JUNE 30, 2020**

Gaming Commission (182-00)

Name of Agency

Vehicle Type	Vehicle Description	Model Year	Model	Person(s) Assigned To	Purpose/Use	Tag Number	Mileage on 6-30-2020	Average Miles per Year	Replacement Proposed	
									FY2021	FY2022
W	XXXXXXXXXXXXX XXXXXXXXXXXXX XXXXXXXXXXXXX X	2004	XXXXXXXXXX XXXXXXXXXX XXXXXXXXXX XXX	JXN-UC	H	XXXXXXXXXXXX XXXX	149,685	10,000		Y
W	2004 GMC SIERRA	2004	GMC	BILX-MOTOR POOL (ENF)	H	G-38316	80,047	5,000		
P	2008 CHEVROLET IMPALA	2008	CHEVROLET	T-MOTOR POOL (ENF)	H	G45476	125,886	20,000		
P	2008 CHEVROLET IMPALA	2008	CHEVROLET	T-MOTOR POOL (ENF)	H	G45475	95,384	15,000		
P	2008 CHEVROLET IMPALA	2008	CHEVROLET	BILX-MOTOR POOL (ENF)	H	G45766	81,571	25,000		
P	2008 CHEVROLET IMPALA	2008	CHEVROLET	T-MOTOR POOL (ENF)	H	G45767	115,072	10,000		
P	2008 CHEVROLET IMPALA	2008	CHEVROLET	JXN-MOTOR POOL	I	G-46669	103,302	15,000		
P	2008 CHEVROLET IMPALA	2008	CHEVROLET	T-MOTOR POOL (ENF)	H	G46670	88,166	10,000		
P	2008 CHEVROLET IMPALA	2008	CHEVROLET	T-MOTOR POOL (COMP)	I	G46667	92,751	20,000		
P	2009 CHEVROLET IMPALA	2009	CHEVROLET	T-MOTOR POOL (ENF)	H	G-50448	80,433	15,000		
P	2009 CHEVROLET IMPALA	2009	CHEVROLET	VICKSB-MOTOR POOL (E	H	G-50445	113,729	10,000		
P	2009 CHEVROLET IMPALA	2009	CHEVROLET	JXN-MOTOR POOL	I	G-50446	136,068	10,000		
P	2009 CHEVROLET IMPALA	2009	CHEVROLET	BILX-MOTOR POOL (ENF)	H	G-50447	71,165	10,000		
P	2009 CHEVROLET IMPALA	2009	CHEVROLET	JXN-BINGO(MOTOR POOL	H	G-50443	130,810	10,000		
P	2009 CHEVROLET IMPALA	2009	CHEVROLET	BILX-MOTOR POOL (ENF)	H	G-50444	75,114	10,000		
P	2011 CHEVROLET IMPALA	2011	CHEVROLET	BILX-MOTOR POOL (ENF)	H	G-56920	59,522	12,000		
P	2011 CHEVROLET IMPALA	2011	CHEVROLET	T-MOTOR POOL (ENF)	H	G-56919	60,660	10,000		
P	2011 CHEVROLET IMPALA	2011	CHEVROLET	JXN-BINGO(MOTOR POOL	H	G-56918	147,006	12,000		Y
P	2011 CHEVROLET IMPALA	2011	CHEVROLET	BILX-MOTOR POOL (ENF)	H	G-56917	52,957	10,000		

Vehicle Type: (P)assenger;(W)ork

**VEHICLE INVENTORY  
AS OF JUNE 30, 2020**

Gaming Commission (182-00)

Name of Agency

Vehicle Type	Vehicle Description	Model Year	Model	Person(s) Assigned To	Purpose/Use	Tag Number	Mileage on 6-30-2020	Average Miles per Year	Replacement Proposed	
									FY2021	FY2022
W	2011 DODGE CARAVAN	2011	DODGE	JXN-MOTOR POOL	I	G-57129	63,929	10,000		
W	2012 DODGE CARAVAN	2012	DODGE	T-MOTOR POOL (COMP)	I	G-59607	44,179	10,000		
W	2012 DODGE CARAVAN	2012	DODGE	BILX-MOTOR POOL (ENF)	I	G-59465	58,671	10,000		
P	2012 CHEVROLET IMPALA	2012	CHEVROLET	VICKSB-MOTOR POOL (C)	I	G-59439	63,348	12,000		
P	2012 CHEVROLET IMPALA	2012	CHEVROLET	JXN-MOTOR POOL	I	G-59436	66,485	10,000		
P	2012 CHEVROLET IMPALA	2012	CHEVROLET	JXN-BINGO(MOTOR POOL	H	G-59441	140,221	10,000		Y
P	2012 CHEVROLET IMPALA	2012	CHEVROLET	T-MOTOR POOL (ENF)	H	G-59445	51,704	10,000		
P	2012 CHEVROLET IMPALA	2012	CHEVROLET	VICKSB-MOTOR POOL (E)	H	G-59435	129,842	10,000		
P	2013 CHEVROLET IMPALA	2013	CHEVROLET	T-MOTOR POOL (ENF)	H	G-63062	44,809	10,000		
P	2013 CHEVROLET IMPALA	2013	CHEVROLET	JXN-MOTOR POOL	I	G-63063	63,289	10,000		
P	2013 CHEVROLET IMPALA	2013	CHEVROLET	VICKSB-MOTOR POOL (E)	H	G-63064	62,464	10,000		
P	2013 CHEVROLET IMPALA	2013	CHEVROLET	VICKSB-MOTOR POOL (E)	H	G-63065	88,121	10,000		
P	2013 CHEVROLET IMPALA	2013	CHEVROLET	VICKSB-MOTOR POOL (E)	H	G-63066	61,565	12,000		
P	2014 FORD FUSION	2014	FORD	JXN-MOTOR POOL	I	G-66415	40,012	10,000		
P	2014 FORD FUSION	2014	FORD	JXN-MOTOR POOL	I	G-66416	117,176	10,000		
P	2014 CHEVROLET IMPALA LIMITED	2014	CHEVROLET	JXN-MOTOR POOL	I	G-66322	79,287	10,000		
P	2014 CHEVROLET IMPALA LIMITED	2014	CHEVROLET	VICKSB-MOTOR POOL (E)	H	G-66321	83,393	15,000		
P	2014 CHEVROLET IMPALA LIMITED	2014	CHEVROLET	T-MOTOR POOL (ENF)	H	G-66319	50,058	12,000		
P	2014 CHEVROLET IMPALA LIMITED	2014	CHEVROLET	JXN-MOTOR POOL (BINGO)	H	G-66320	81,722	12,000		
W	XXXXXXXXXXXXX XXXXXXXXXXXXX XXXXXXXXXXXXX X	2015	XXXXXXXXXX XXXXXXXXXX XXXXXXXXXX XXX	JXN-UC	H	XXXXXXXXXXXXX XXXX	121,300	12,000		

Vehicle Type: (P)assenger (W)ork



**VEHICLE INVENTORY  
AS OF JUNE 30, 2020**

Gaming Commission (182-00)

Name of Agency

Vehicle Type	Vehicle Description	Model Year	Model	Person(s) Assigned To	Purpose/Use	Tag Number	Mileage on 6-30-2020	Average Miles per Year	Replacement Proposed	
									FY2021	FY2022
W	XXXXXXXXXXXXX XXXXXXXXXXXXX XXXXXXXXXXXXX X	2015	XXXXXXXXXX XXXXXXXXXX XXXXXXXXXX XXX	JXN-UC	H	XXXXXXXXXXXX XXXX	144,947	12,000		Y
P	2015 FORD TAURUS	2015	FORD	JXN-MOTOR POOL	H	G-69890	26,822	12,000		
P	2015 FORD TAURUS	2015	FORD	BILOXI-MOTOR POOL ENF	H	G-69891	36,771	12,000		
P	2015 FORD TAURUS	2015	FORD	JXN-MOTOR POOL	H	G-69892	28,262	12,000		
P	2016 FORD FUSION	2016	FORD	BILOXI-MOTOR POOL ENF	H	G-72018	24,305	12,000		
P	2016 FORD FUSION	2016	FORD	BILOXI-MOTOR POOL ENF	H	G-72016	22,981	12,000		
P	2016 FORD FUSION	2016	FORD	T-MOTOR POOL (ENF)	H	G-72017	35,136	12,000		
W	XXXXXXXXXXXXX XXXXXXXXXXXXX XXXXXXXXXXXXX X	2016	XXXXXXXXXX XXXXXXXXXX XXXXXXXXXX XXX	JXN-UC	H	XXXXXXXXXXXX XXXX	94,589	12,000		
W	XXXXXXXXXXXXX XXXXXXXXXXXXX XXXXXXXXXXXXX X	2016	XXXXXXXXXX XXXXXXXXXX XXXXXXXXXX XXX	JXN-UC	H	XXXXXXXXXXXX XXXX	46,882	12,000		
P	2017 FORD TAURUS	2017	FORD	BILX-MOTOR POOL (ENF)	H	G-77369	13,166	14,000		
P	2017 FORD TAURUS	2017	FORD	BEN HARPER	H	G-77367	86,805	15,000		
P	2017 FORD TAURUS	2017	FORD	BILX-MOTOR POOL (ENF)	H	G-77366	11,244	12,000		
P	2017 FORD TAURUS	2017	FORD	T-MOTOR POOL (ENF)	H	G-77368	23,579	12,000		
W	2018 DODGE DURANGO	2018	DODGE	VICKSBURG-MP	H	G-78699	34,003	12,000		
P	2018 FORD TAURUS	2018	FORD	JXN-MOTOR POOL	H	G-80758	11,228	12,000		
P	2018 FORD TAURUS	2018	FORD	JXN-MOTOR POOL	H	G-80757	23,366	12,000		
P	2018 FORD TAURUS	2018	FORD	JXN-MOTOR POOL	H	G-80759	48,767	12,000		

Vehicle Type: (P)assenger/(W)ork

**VEHICLE POOL MEMBER LIST  
2022 BUDGET REQUEST**

**Gaming Commission (182-00)**

---

Name of Agency

Jackson Office  
1 Alan Sang  
2 Allen Godfrey  
3 Amanda Lieb  
4 Amanda Rebert  
5 Bei Wong  
6 Benjamin Harper  
7 Benny Mak  
8 Benny Nutt  
9 Brad Hetherington  
10 Brandon Waltman  
11 Brandy Rife  
12 Brittney Watson  
13 Chris Godfrey  
14 Chris Krzyzkowski  
15 Chris Woods  
16 Christy McCoy  
17 Dan Ratliff  
18 Daphne Barney  
19 Dellie Wiselogel  
20 Dennis Davenport  
21 Donna Sebren  
22 Ed Wong  
23 Eddie Williams  
24 Emil Lyon  
25 Eric Thomas  
26 Erin Atarji  
27 Hal Bounds  
28 Jack DePoyster  
29 James Monroe  
30 Jane Boothe  
31 Jay McDaniel  
32 Jeffory McKenzie  
33 Jeni Broadwater  
34 Justin Young  
35 Josh Fulgham  
36 Keith Anderson  
37 Kimberly Brown  
38 Kimberly Neal  
39 Kris Hough  
40 Lashana Thigpen  
41 Leland Chow  
42 Matthew Junkin  
43 Marina Green  
44 Michael Atkinson  
45 Monica Barnes  
46 Patrick Dodge  
47 Paul Allen  
48 Phillip Underwood  
49 Regina Holbrooks  
50 Reginald Finch  
51 Robert Dye  
52 Rodney Smith  
53 Rodney Tutor  
54 Shelly LeGrand  
55 Shonda Clark  
56 Sonny Dyer  
57 Stephanie Sills  
58 Terry Brown  
59 Tom Hoover  
60 Tom Mikula  
61 Trish Edwards  
62 Tyler Griffing

**VEHICLE POOL MEMBER LIST  
2022 BUDGET REQUEST**

**Gaming Commission (182-00)**

---

**Name of Agency**

**Biloxi Office**

- 1 Barbara Duhon
- 2 Blake Sessums
- 3 Bryan Alexander
- 4 Carrie Watson
- 5 Christi Collins
- 6 Dave Kingman
- 7 Derek Rosenquist
- 8 Elizabeth Hawk
- 9 Julie Nguyen
- 10 Lisa Ware
- 11 Megan Heffner
- 12 Michael Gremillion
- 13 Nathaniel Parsons
- 14 Richard Tuck
- 15 Robert Echelberry
- 16 Roger Hayes
- 17 Sherri Powell
- 18 Shonda Clark
- 19 Stephanie Yeatts
- 20 Susan Foss
- 21 Tony Fedele
- 22 Utopia Robinson
- 23 William Hinton

**Tunica Office**

- 1 Alisa Crockett
- 2 Amesha Gross
- 3 Ashley Beaver
- 4 Barbara Pence
- 5 Beckett Hadley
- 6 Billy England
- 7 Drew Edwards
- 8 JC Smiley
- 9 Jeremy Herring
- 10 Keenika Shegog
- 11 Kevin Cook
- 12 LaKay Moore
- 13 Melanie Turner
- 14 Patricia Johnson
- 15 Scott Kistler
- 16 Stephen McBride

**PRIORITY OF DECISION UNITS  
FISCAL YEAR 2022**

Gaming Commission (182-00)

Name of Agency

Program	Decision Unit	Object	Amount
<b>Priority # 1</b>			
Program # 1: Riverboat Gaming	Vehicles	Vehicles	135,000
		<b>Totals</b>	135,000
		General Funds	60,000
		Other Special Funds	75,000
Program # 2: Charitable Bingo	Travel	Travel	35,000
		<b>Totals</b>	35,000
		General Funds	35,000
<b>Priority # 2</b>			
Program # 1: Riverboat Gaming	Contractual Services	Contractual	296,085
		<b>Totals</b>	296,085
		General Funds	166,085
		Other Special Funds	130,000
Program # 2: Charitable Bingo	Contractual Services	Contractual	15,000
		<b>Totals</b>	15,000
		General Funds	15,000
<b>Priority # 3</b>			
Program # 1: Riverboat Gaming	Travel	Travel	58,263
		<b>Totals</b>	58,263
		General Funds	58,263
Program # 2: Charitable Bingo	Commodities	Commodities	5,000
		<b>Totals</b>	5,000
		General Funds	5,000

**Priority # 4**

**PRIORITY OF DECISION UNITS  
FISCAL YEAR 2022**

Gaming Commission (182-00)

Name of Agency

Program	Decision Unit	Object	Amount
Program # 1: Riverboat Gaming	Commodities	Commodities	39,041
		<b>Totals</b>	39,041
		General Funds	57,569
		Other Special Funds	(18,528)

**Priority # 5**

Program # 1: Riverboat Gaming

Equipment

Equipment	59,841
<b>Totals</b>	59,841
General Funds	67,839
Other Special Funds	(7,998)

# CAPITAL LEASES

Gaming Commission (182-00)

Name of Agency

VENDOR/ ITEM LEASED	Original Date of Lease	Original No. of Months of Lease	No. of Months Remaining on 6-30-20	Last Payment Date	Interest Rate	Amount of Each Payment			Total of Payments To Be Made					
						Actual FY 2020			Estimated FY 2021			Requested FY 2022		
						Principal	Interest	Total	Principal	Interest	Total	Principal	Interest	Total

## Summary of 3% General Fund Program Reduction to FY 2021 Appropriated Funding by Major Object

Gaming Commission (182-00)

Name of Agency

Major Object	FY2021 General Fund Reduction	EFFECT ON FY2021 STATE SUPPORT SPECIAL FUNDS	EFFECT ON FY2021 FEDERAL FUNDS	EFFECT ON FY2021 OTHER SPECIAL FUNDS	TOTAL 3% REDUCTIONS
SALARIES, WAGES, FRINGE	(219,683)				(219,683)
TRAVEL	(3,802)				(3,802)
CONTRACTUAL	(11,829)				(11,829)
COMMODITIES	(3,830)				(3,830)
OTHER THAN EQUIPMENT					
EQUIPMENT					
VEHICLES					
WIRELESS COMM. DEVS.					
SUBSIDIES, LOANS, ETC					
TOTALS	(239,144)				(239,144)

Out of Country Travel Fiscal Year 2022

Gaming Commission (182-00)

EmployeeName	Destination	Purpose	Cost	FundSource
HOUGH THOMAS	AMSTERDAM NETHERLANDS LONDON UK	INVESTIGATION	6900	3318700000
WOODS CARL	AMSTERDAM NETHERLANDS LONDON UK	INVESTIGATION	6830	3318700000
BROWN TERRY	BRUSSELS BE	INVESTIGATION	14700	3318700000
WEEKS FREDDIE	BRUSSELS BE	INVESTIGATION	14261	3318700000

42691



Agency Revenue Source Report - FY2020 Data  
As Required by HB 831, 2015 Legislative Session  
And SB 2387, 2016 Legislative Session

Agency Name	Mississippi Gaming Commission 182-00		
Budget Year	Fiscal Year 2020		
<u>State Support Sources</u>	Amount Received		
General Funds SB 3037 (Fund 2218700000)	\$	8,436,223.00	
State Support Special Funds:	Amount Received		
Education Enhancement Funds			
Health Care Expendable Funds			
Tobacco Control Funds			
Capital Expense Funds			
Budget Contingency Funds			
Working Cash Stabilization Reserve Funds			
BP Settlement Fund			
Gulf Coast Restoration Fund			
SSSF new 1			
SSSF new 2			
SSSF new 3			
SSSF new 4			
SSSF new 5			
List all Federal Funds at its most specific level, such as an office or division, include name of grant, grantor, not the federal department.			
<u>Federal Funds</u>	Amount Received		Action or results promised in order to receive funds
Federal Fund #1			
Federal Fund #2			
Description of any Maintenance of Effort agreements entered into with any federal agency or subdivision thereof			
<u>Special Funds</u>	Amount Received		
Special Fund SB 3037 (Fund 3318700000)	\$	766,211.00	
<u>Revenue from Tax, Fine or Fee Assessed</u>	Amount Assessed		
Casino Quarterly Fee	Amount Collected		\$ 4,258,333.00
	Authority to Collect		Miss Code Ann. 75-76-325, 75-76-33, 76-75-5
	Method of Determining Assessment		MGC Regulations Part 7, Chapter 4
	Method of Collection		Quarterly Invoice
	Amt. & Purpose for which Expended		
	Amount		Purpose
	\$	4,258,333.00	Defraying the expenses of the Mississippi Gaming Commission
<u>Revenue from Tax, Fine or Fee Assessed</u>	Amount Assessed		
Work Permits	Amount Collected		\$ 93,840.00
	Authority to Collect		Miss Code Ann. 75-76-325, 75-76-33, 76-75-5; MGC Regulations Part 7, Chapter 4
	Method of Determining Assessment		Work Permit fee \$75/original; \$125/renewal
	Method of Collection		Proof of payment required before permit is processed
	Amt. & Purpose for which Expended		
	Amount		Purpose
	\$	93,840.00	Defraying the expenses of the Mississippi Gaming Commission
<u>Revenue from Tax, Fine or Fee Assessed</u>	Amount Assessed		
Investigations	Amount Collected		\$ 154,900.00
	Authority to Collect		Miss Code Ann. 75-76-325, 75-76-33, 76-75-5; MGC Regulations Part 7, Chapter 4
	Method of Determining Assessment		Estimated fee collected prior to service rendered
	Method of Collection		
	Amt. & Purpose for which Expended		
	Amount		Purpose
	\$	154,900.00	Defraying the expenses of the Mississippi Gaming Commission
<u>Revenue from Tax, Fine or Fee Assessed</u>	Amount Assessed		
Gaming Laboratory Fee	Amount Collected		\$ 365,775.00
	Authority to Collect		Miss Code Ann. 75-76-325, 75-76-33, 76-75-5; MGC Regulations Part 7, Chapter 4
	Method of Determining Assessment		
	Method of Collection		Monthly Invoice/\$225 per line item
	Amt. & Purpose for which Expended		
	Amount		Purpose
	\$	365,775.00	Defraying the expenses of the Mississippi Gaming Commission
<u>Revenue from Tax, Fine or Fee Assessed</u>	Amount Assessed		
Gaming Laboratory - Shipping Fee	Amount Collected		\$ 273,150.00
	Authority to Collect		Miss Code Ann. 75-76-325, 75-76-33, 76-75-5; MGC Regulations Part 7, Chapter 4
	Method of Determining Assessment		

	Method of Collection Amt. & Purpose for which Expended Amount \$ 273,150.00	Monthly Invoice/\$100 per machine  Purpose Defraying the expenses of the Mississippi Gaming Commission
<u>Revenue from Tax, Fine or Fee Assessed</u> Associated Equipment Fee	Amount Assessed Amount Collected  Authority to Collect Method of Determining Assessment Method of Collection Amt. & Purpose for which Expended Amount \$ 27,813.00	  \$ 27,813.00 Miss Code Ann. 75-76-325, 75-76-33, 76-75-5; MGC Regulations Part 7, Chapter 4  Monthly Invoice/ Associated Equipment fee \$125/hour  Purpose Defraying the expenses of the Mississippi Gaming Commission
<u>Revenue from Tax, Fine or Fee Assessed</u> Annual Report Filing Fee	Amount Assessed Amount Collected  Authority to Collect Method of Determining Assessment Method of Collection Amt. & Purpose for which Expended Amount \$ 1,500.00	  \$ 1,500.00 Miss Code Ann. 75-76-325, 75-76-33, 76-75-5; MGC Regulations Part 7, Chapter 4  Annual report filing fee \$150/suitability license  Purpose Defraying the expenses of the Mississippi Gaming Commission
<u>Revenue from Tax, Fine or Fee Assessed</u> Corporate Securities	Amount Assessed Amount Collected  Authority to Collect Method of Determining Assessment Method of Collection Amt. & Purpose for which Expended Amount \$ 19,000.00	  \$ 19,000.00 Miss Code Ann. 75-76-325, 75-76-33, 76-75-5; MGC Regulations Part 7, Chapter 4  Corporate and investigations fee \$80/hour plus expenses  Purpose Defraying the expenses of the Mississippi Gaming Commission
<u>Revenue from Tax, Fine or Fee Assessed</u> Self Excursion Winnings	Amount Assessed Amount Collected  Authority to Collect Method of Determining Assessment Method of Collection Amt. & Purpose for which Expended Amount \$ 17,169.00	  \$ 17,169.00 Miss Code Ann. 75-76-325, 75-76-33; MGC Regulations Part 3, Chapter 10  Collected at time of payment  Purpose Defraying the expenses of the Mississippi Gaming Commission
<u>Revenue from Tax, Fine or Fee Assessed</u> Reimbursement from FBI - S Agent Salary	Amount Assessed Amount Collected Authority to Collect Method of Determining Assessment Method of Collection Amt. & Purpose for which Expended Amount \$ 13,252.00	  \$ 13,252.00 Miss Code Ann. 75-76-325  Collected at time of payment  Purpose Reimbursement for Salary expense - S Agent
<u>Revenue from Tax, Fine or Fee Assessed</u> Refunds from Vendors	Amount Assessed Amount Collected Authority to Collect Method of Determining Assessment Method of Collection Amt. & Purpose for which Expended Amount \$ 4,851.00	  \$ 4,851.00 Miss. Code Ann. 75-76-325, 75-76-33  Collected at time of payment  Purpose Defraying the expenses of the Mississippi Gaming Commission
<u>Revenue from Tax, Fine or Fee Assessed</u> Charitable Gaming	Amount Assessed Amount Collected  Authority to Collect Method of Determining Assessment Method of Collection Amt. & Purpose for which Expended Amount \$ 1,276,643.00	  \$ 1,276,643.00 Miss. Code Ann. 57-33-101, 97-33-107, 97-33-109; MGC Regulation 9 (fees)  Collected at time of payment  Purpose Defraying the expenses of the Mississippi Gaming Commission
<u>Revenue from Tax, Fine or Fee Assessed</u> Seized Funds Special Fund 3318700000	Amount Assessed Amount Collected Authority to Collect Method of Determining Assessment	  \$ 79,353.00 Miss. Code Ann. 97-33-11 (g)

Method of Collection  
 Amt. & Purpose for which Expended  
 Amount  
 \$ 79,353.00

Seized money  
 Purpose  
 Law Enforcement Enhancements

Revenue from Tax, Fine or Fee Assessed  
 Work Permits  
 Special Fund 3318700000

Amount Assessed  
 Amount Collected  
 Authority to Collect  
 Method of Determining Assessment  
 Method of Collection  
 Amt. & Purpose for which Expended  
 Amount  
 \$ 398,630.00

\$ 398,630.00  
 Miss Code Ann. 75-76-325, 75-76-33, 76-75-S; MGC Regulations Part 7, Chapter 4  
 Work Permit fee \$75/original; \$125/renewal  
 Proof of payment required before permit is processed  
 Purpose  
 Fingerprint Analysis by DPS

Revenue from Tax, Fine or Fee Assessed  
 Investigations  
 Special Fund 3318700000

Amount Assessed  
 Amount Collected  
 Authority to Collect  
 Method of Determining Assessment  
 Method of Collection  
 Amt. & Purpose for which Expended  
 Amount  
 \$ 215,601.00

\$ 215,601.00  
 Miss Code Ann. 75-76-325, 75-76-33, 76-75-S; MGC Regulations Part 7, Chapter 4  
 Estimated cost collected prior to travel to conduct investigations  
 Purpose  
 Travel (out of state and out of country) required to conduct investigations

Amount Transferred to General Fund  
 Authority for Transfer to General Fund  
 Amount Transferred to Another Entity  
 Authority for Transfer to Other Entity  
 Name of Other Entity  
 Fiscal Year-Ending Balance

\$ 6,506,226.00  
 \$0.00

Governor

Tate Reeves

MISSISSIPPI GAMING COMMISSION  
FISCAL YEAR 2021

*Allen Godfrey*  
AUTHORIZED SIGNATURE

07/01/2020  
PAGE 1 OF 11

Gaming Commissioners  
Major General (R) Al Hopkins, Chairman  
Jerry Griffith, Commissioner  
Tom Gresham, Commissioner

EXECUTIVE DIRECTOR  
GAMING COMMISSION  
X-16  
93.0 E 5001

HEARING OFFICER

DIVISION DIRECTOR II  
46.5 E 0079  
SELF EXCLUSIONS

LEGAL  
ATTORNEY GENERALS  
OFFICE

STAFF OFFICER I  
X-16 E 0068  
42.5

GAM-DEPUTY DIRECTOR  
X-16 E 5002  
77.9

GAM-DEPUTY DIRECTOR  
X-16 E 0024  
77.9

*Allen Lodgery*

AUTHORIZED SIGNATURE

07/01/2020

PAGE 2 OF 11

GAM-DEPUTY DIRECTOR  
X-16 E 5002  
77.9 COMPLIANCE & INVESTIGATIONS

GAM-DIVISION DIRECTOR  
X-16 E 0003  
67.4 INVESTIGATIONS

GAM-DIVISION DIRECTOR  
X-16 E 0109  
67.4 COMPLIANCE

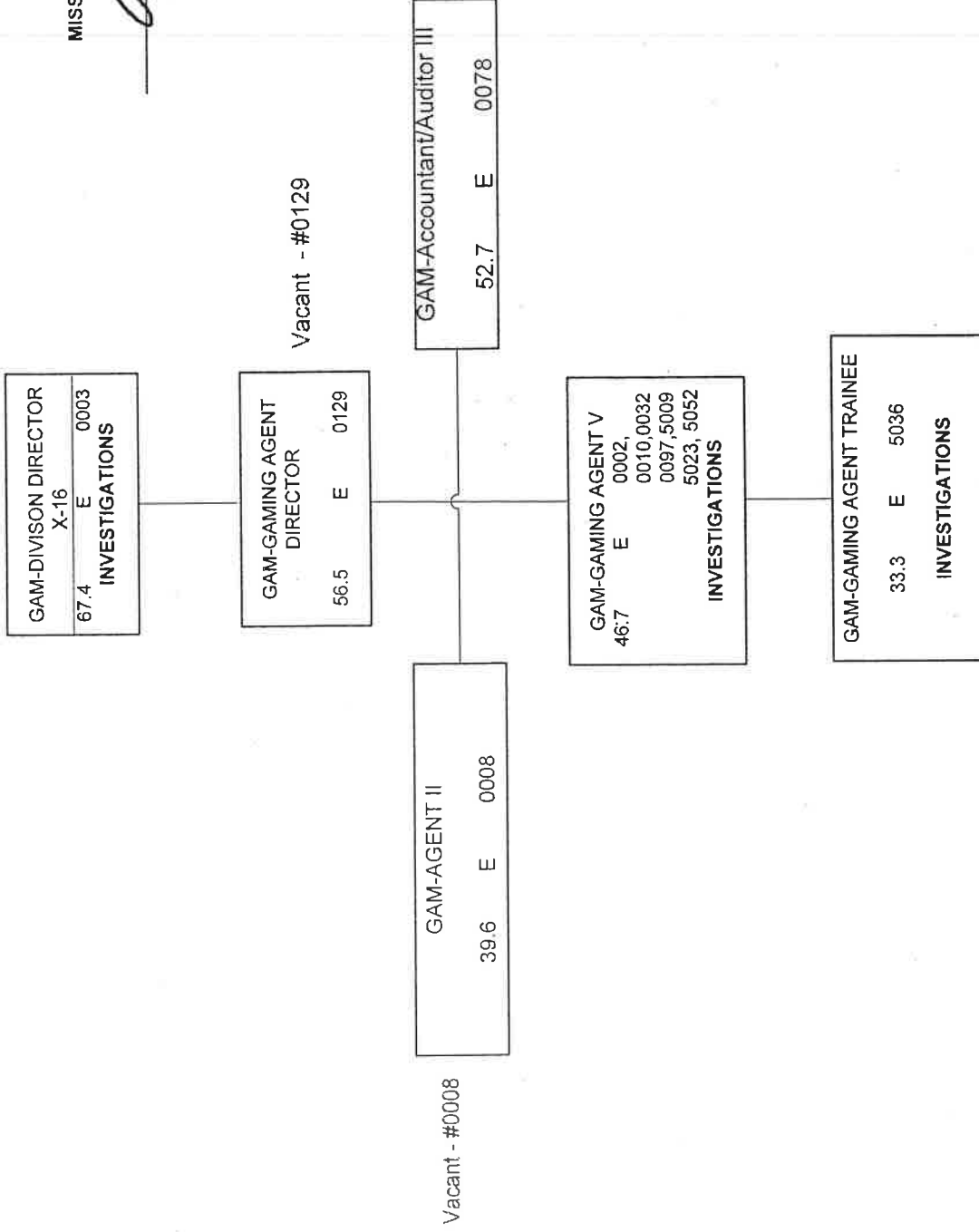
GAM-DIVISION- DIRECTOR  
X-16 E 5004  
67.4 WORK PERMITS

GAM-DIVISION-DIRECTOR  
X16 E 0004  
67.4 ENFORCEMENT

GAM-ACCOUNTANT  
AUDITOR III  
52.7 E 0105  
CORPORATE SECURITIES

GAM-GAMING SPECIAL AGENT  
E 50.9 0065  
LAW ENFORCEMENT TRAINING

*Allen Godfrey*  
AUTHORIZED SIGNATURE  
07/01/2020



GAM-DIVISION DIRECTOR  
X-16 E 0109  
67.4 COMPLIANCE

MISSISSIPPI GAMING COMMISSION  
FISCAL YEAR 2021  
*Allen Bodrey*  
AUTHORIZED SIGNATURE  
07/01/2020  
PAGE 4 OF 11

GAM-Accountant/Auditor III,  
52.7 E 0110

GAM-Accountant/Auditor III  
52.7 E 0053

GAM-Accountant/ Auditor IV,  
58.1 E 0114  
BILOXI

GAM-Accountant /Auditor IV,  
58.1 E 0100  
VICKSBURG

GAM-Accountant/Auditor IV,  
58.1 E 0096  
TUNICA

GAM-Accountant/Auditor III,  
52.7 E 0102,  
0117, 0133, 0141,  
0142, 5026

GAM-Accountant/Auditor III,  
52.7 E 0133, 0139,  
0145, 5054

GAM-Accountant/Auditor III,  
52.7 E 0112, 0113  
0143, 0144,  
0164

Vacant - #0113

Vacant - #0139

GAM-Accountant/Auditor II,  
47.8 E 0163

GAM-Accountant/Auditor I  
47.8 E 0037,  
0077

GAM-Accountant/Auditor II,  
47.8 E 0072

Vacant - #0072

Vacant - #0037  
Vacant - #0077

Vacant - #0163

GAM-Accountant/Auditor I  
43.5 E 0146

Vacant - #0146

GAM-DIVISION DIRECTOR  
X-16  
E 5004  
67.4  
WORK PERMITS.

ADMIN ASST VII  
34.4 N 0064

GAM- GAMING SPECIAL AGENT  
50.9 P 0009

GAM-GAMING AGENT V  
46.7 P 0054,0137

GAM - GAMING AGENT IV  
44.3 P NONE

GAM- GAMING AGENT III  
41.9 P 0048, 5024

MISSISSIPPI GAMING COMMISSION

FISCAL YEAR 2021

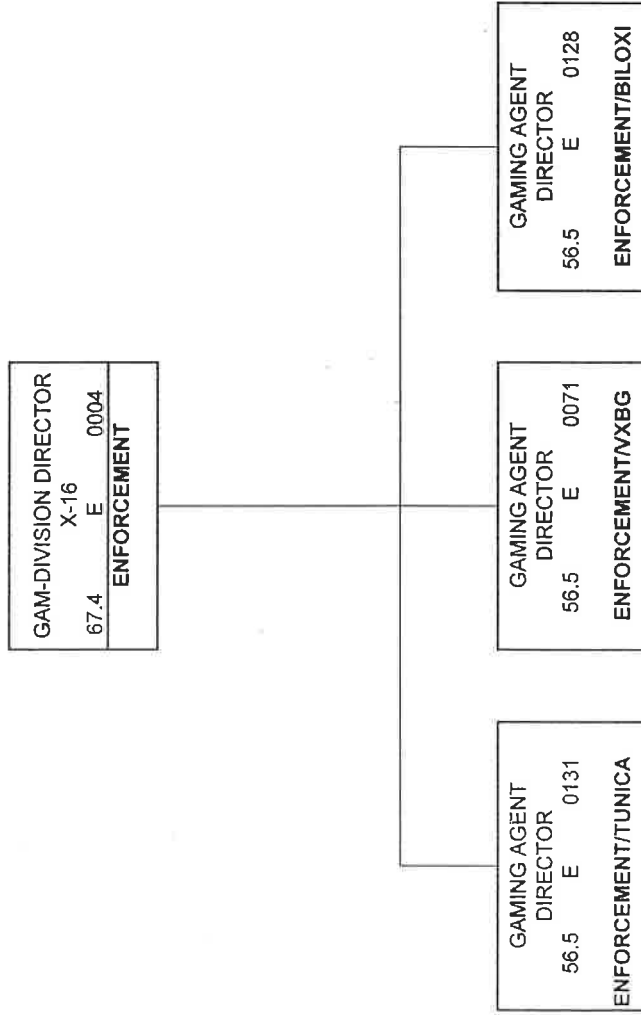
*Allen Godfrey*

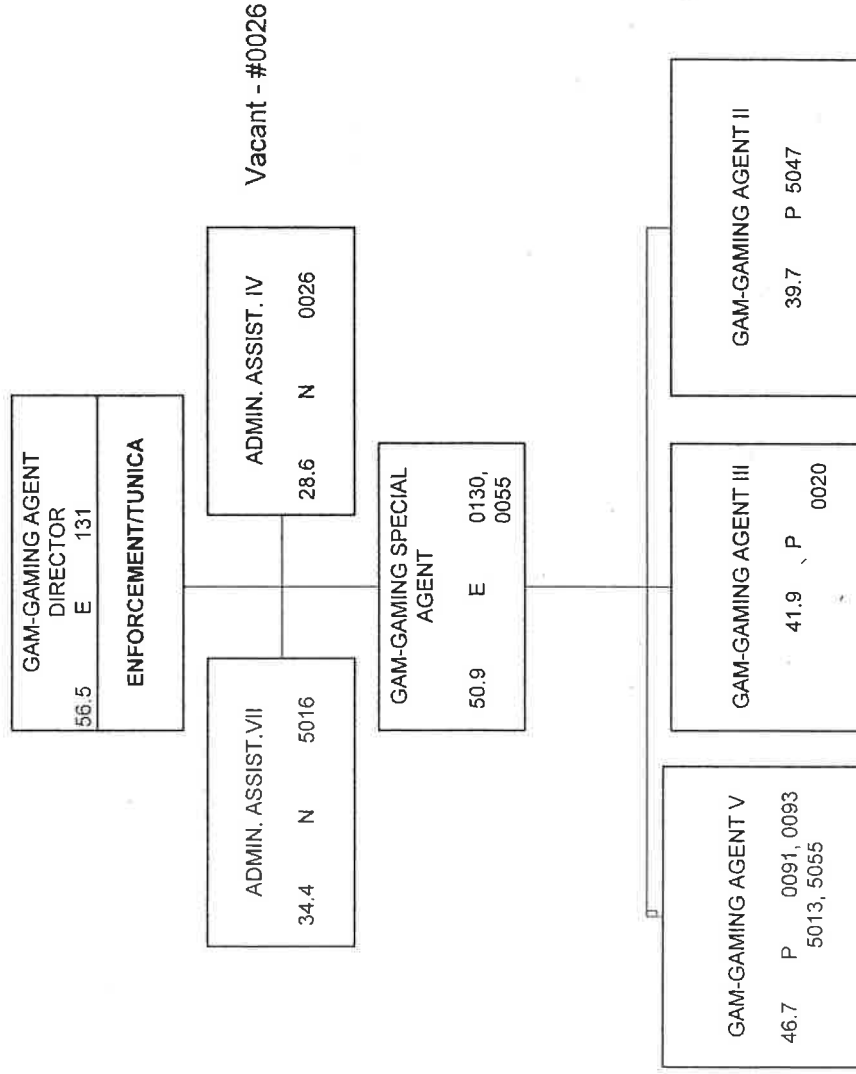
AUTHORIZED SIGNATURE

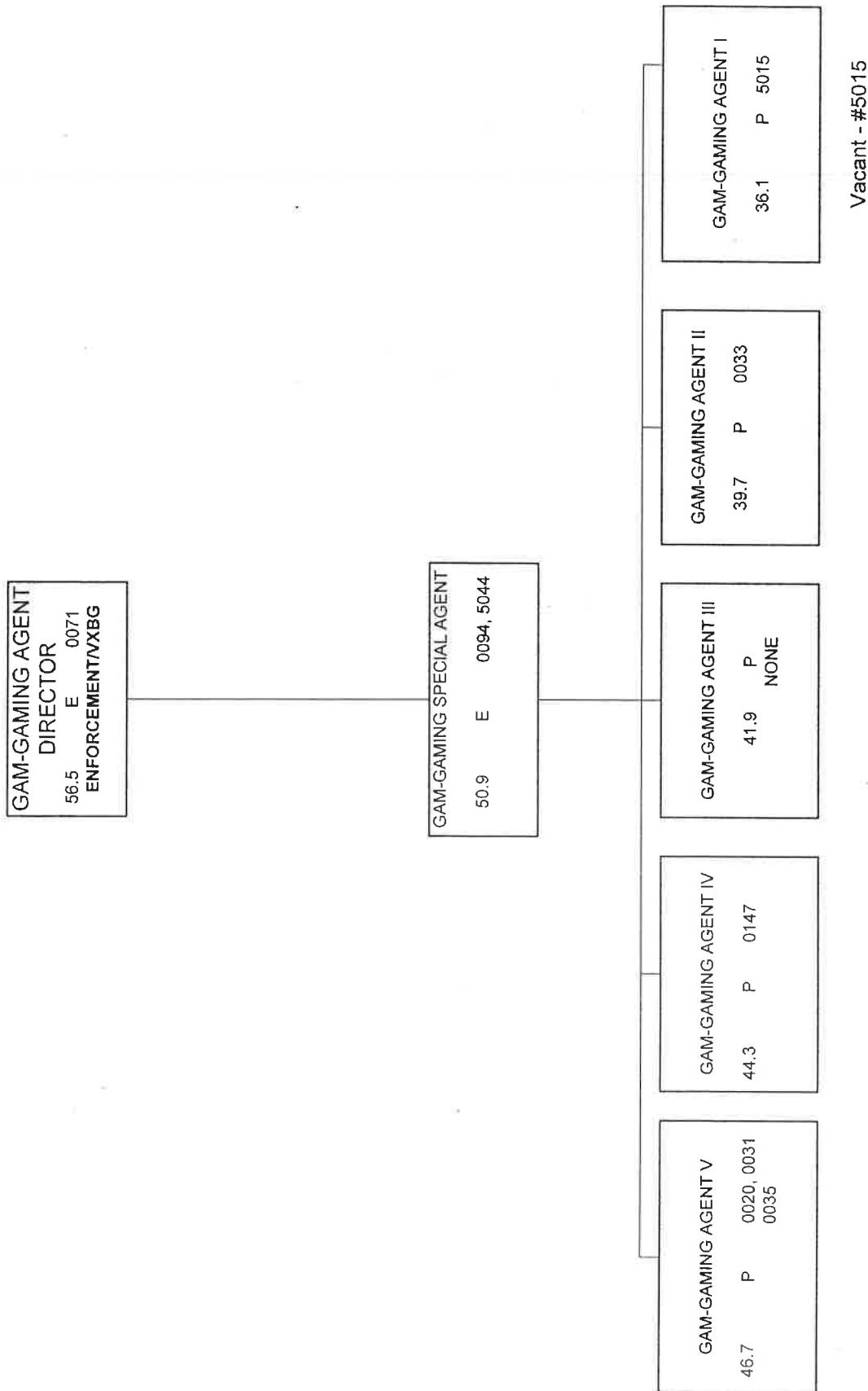
07/01/2020

PAGE 5 OF 11









*Alan Gooden*

AUTHORIZED SIGNATURE

07/01/2020

PAGE 6C OF 11

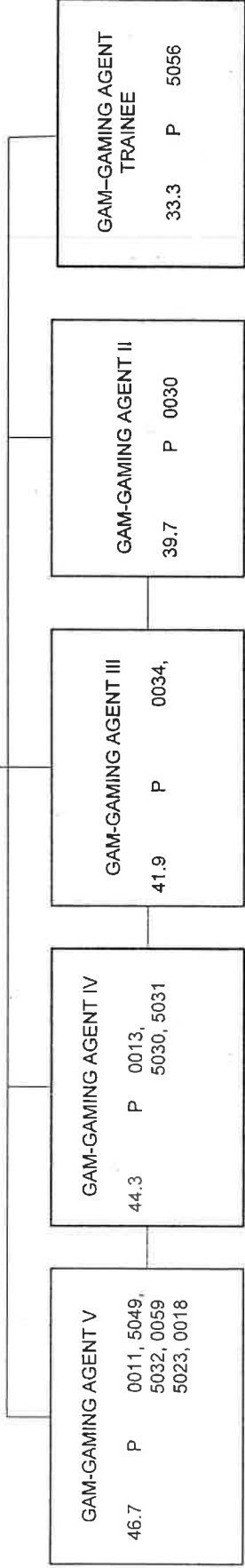
GAM-GAMING AGENT DIRECTOR 56.5 E 0128	ENFORCEMENT/BILOXI
---	--------------------

ADMIN. ASSIST. VII 34.4 N 0042
-----------------------------------

ADMIN. ASSIST. VII 34.4 N 5028
-----------------------------------

Vacant - #5028

GAM-GAMING SPECIAL AGENT 50.9 E 0021, 5017
---



*Allen Rodkey*  
 AUTHORIZED SIGNATURE

07/01/2020

PAGE 7 OF 11

GAM-DEPUTY DIRECTOR  
 X-16 E 0024  
 ENFORCEMENT &  
 ADMINISTRATION

GAM-GAMING SPECIAL AGENT  
 50.9 E 0046, 0056 5008,  
 5038, 5051  
 CID

Vacant - #5038

GAM-LABORATORY-DIR  
 X-16 E 5045  
 TECHNOLOGY &  
 INFORMATION SERVICES

GAM-DIVISION DIRECTOR  
 X-16 E 5032  
 CHARITABLE GAMING

Vacant- #5032

ACCOUNTING/AUDITOR  
 DIVISION DIRECTOR  
 X-16 E 5011  
 ADMINISTRATION

SYSTEMS MANAGER I  
 56.9 E 0066  
 DIR OF MIS

Staff Officer I  
 E 5041  
 42.5

Vacant - #5041

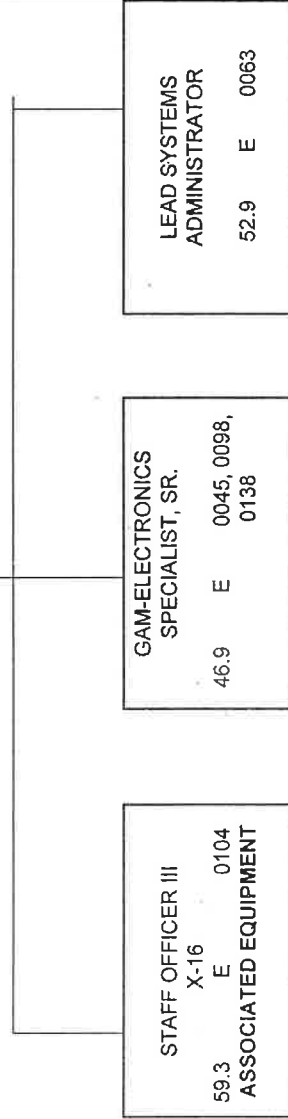
*Allen Rodger*

AUTHORIZED SIGNATURE

07/01/2020

PAGE 8 OF 11

GAM-LABORATORY DIR.		
X-16	E	5045
73.0	E	5045
TECHNOLOGY & INFORMATION SERVICES		



Vacant - #0104

*Allen Godfrey*  
 AUTHORIZED SIGNATURE

07/01/2020

PAGE 9 OF 11

GAM-DIVISION DIRECTOR	X-16	E	5032
67.4			
CHARITABLE GAMING			

Vacant - #5032

STAFF OFFICER I	X-16	E	0068
42.5			

Vacant - #0068

GAM-GAMING AGENT DIRECTOR	56.5	E	0062
ENFORCEMENT			

GAM-GAMING SPECIAL AGENT	50.9	E	5033
-----------------------------	------	---	------

GAM-GAMING AGENT V	46.7	E	0017, 0029, 0049, 0058, 0087, 5037
--------------------	------	---	---------------------------------------

GAM- GAMING AGENT TRAINEE	33.3	P	0090
---------------------------	------	---	------

GAM-ACCOUNTANT/ AUDITOR IV	58.1	E	0103
COMPLIANCE			

GAM-ACCOUNTANT/ AUDITOR III	52.7	E	5040
--------------------------------	------	---	------

Vacant - #0087

Vacant - #0090

ACCOUNTING/AUDITING  
DIVISION DIRECTOR  
X-16 E 5011  
ADMINISTRATION SERVICES

AUTHORIZED SIGNATURE  
07/01/2020  
PAGE 10 OF 11

GAM- GAMING SPECIAL  
AGENT  
50.9 P 0009

Administrative Assistant V  
N 73

Vacant - #0073

Accountant/ Auditor IV  
X-16 E 0107  
58.1

Administrative Assistant VII  
34.4 N 0001, 0073, 5034

Human Resources Generalist IV  
42.1 E 5019

Human Resources Generalist IV  
42.1 E 0074

ACCOUNTING  
SPECIALIST SR  
42.0 E 5003

PROJECTS OFFICER IV, SPEC  
X-16 E 0050  
37.3

BRANCH DIRECTOR II  
40.5 E 0075

Vacant #5003

Vacant - #0050

STAFF OFFICER I  
X-16 E 0005  
42.5



*Allen Godfrey*

AUTHORIZED SIGNATURE

07/01/2020

PAGE 11 OF 11

SYSTEMS MANAGER I

56.9 E 0066

DIR OF M.I.S.

Vacant - #0086

SENIOR SYSTEMS ADMINISTRATOR

42.4 E 0086